



SG
SEATTLE GLOVE INC

INDUSTRIAL PROTECTIVE WEAR

FOR ALL YOUR NEEDS

PRODUCT CATALOG

EDITION 25



Leather Drivers	7-20	Compliance Testing	52-54
Goatskin.....	7	ANSI Vs EN388 Standards.....	53
Deerskin/Elk.....	8	Cut Resistant.....	54
Grain Cow/Split Cow.....	9-12	Cut Resistant	55-63
Pigskin. & Synthetic.....	13-14	Coated.....	56-59
Hi-Vis Drivers.....	15	Sleeves.....	60
Lined Drivers.....	16-19	Leather.....	61-63
Leather Palms	20-26	Disposables	64-65
Cowhide.....	20-25	PVC	66-68
Pigskin.....	25	Unsupported	69
Lined Leather Palms.....	26	Rainwear	70-71
Welders	27-30	Boots	72
Premium.....	28,29	Welding Apparel	73
Economy.....	30	Safety Vest	74-78
Mechanics	31-33	FR Coverall	79
Synthetic Leather.....	32	Winter Apparel	80
Deerskin.....	33	Disposable Coveralls	81-82
Goatskin.....	33	Safety Glasses	83-85
Pigskin.....	33	Accessories	86
Mechanic/Impact	34-36	Dupont	87-98
Cowhide.....	34	CE Certification	99
Goatskin.....	34	Glove Patterns	100
Nitrile.....	35, 36	Glove Chemical Resistance Guide	101-104
Cotton	38-44	Seattle Glove Quick Guide	105-109
Jerseys.....	38		
Canvas/Double Palms.....	39,40		
Hi-Vis.....	41		
Chores.....	42		
Hot Mills.....	43		
Inspectors.....	44		
String Knit	45-46		
Coated Gloves	48-51		
Latex.....	48-49		
Nitrile.....	50		
Polyurethane.....	51		



Our success has been made possible by the distributors we partner with. We aim to enhance their product offerings, while maintaining the ability to provide them with our quality safety products at a competitive price.

WHY CHOOSE SEATTLE GLOVE:

- **CARING AND KNOWLEDGABLE STAFF**
- **DEPENDABLE QUALITY**
- **SAME DAY SHIPPING**
- **NO MINIMUM ORDER QUANTITIES**
- **CUSTOM PRINTING AND BRANDING CAPABILITY**



Seattle Glove Inc.

For over 30 years, Seattle Glove has been building our brand of general safety products, servicing industries and manufacturers all over North America. From individuals pruning their lawn to construction workers, line assemblers, food processors, sheet metal fabricators, automotive workers, oil and gas industry workers and welding technicians, our goal is to find the right safety product for your specific application. As we continue to grow and expand, our basic principles are still in practice today:

- Value:** We consistently explore options to reduce our operational costs while delivering to our customers. We provide a total cost savings while offering a wide range of quality safety products.
- Convenience:** Through our one-stop shop model, we offer distributors convenience, cost savings, efficiency and quality assurance.
- Service:** We conduct our business with integrity. Our talented workforce is committed to superior service supported by exceptional resources, tools, and product knowledge.

We are a full-line safety company with an emphasis on gloves. With expansive selections in protective garments and footwear, we strive in becoming a “one-stop shop” for our distributors. We sell our products to industrial safety distributors, shipping from our warehouse in Mukilteo, Washington.

We are devoted to becoming a leader in gloves, protective garments, personal protection and safety equipment. As we continue to grow and expand our product line, we have added safety products that are more comfortable while minimizing risk of injuries. We are proud of our product expansion but also see opportunities for future growth.

Seattle Glove is proud of the progress we have made in integrating new products that minimize injuries while enhancing productivity to a wide range of users. We will continue our dedication in research and product development ensuring a safer environment for all customers. At Seattle Glove we take pride in our service and knowledge. Our staff will help you determine which of our broad range of products will best suit your needs.

Sincerely,
Thieu H. Tran
President

SOME THINGS YOU SHOULD KNOW ABOUT LEATHER



Confused about quality?

Seattle Glove offers many different leather types and styles. This includes different hems, thumbs, and stitching. This can lead to endless combinations! To assist in your glove buying decisions, we strongly urge sample comparison and user field evaluations.

Our knowledgeable staff can assist you by phone or email so that you make the best decision for your protection needs!

TYPES OF LEATHER:

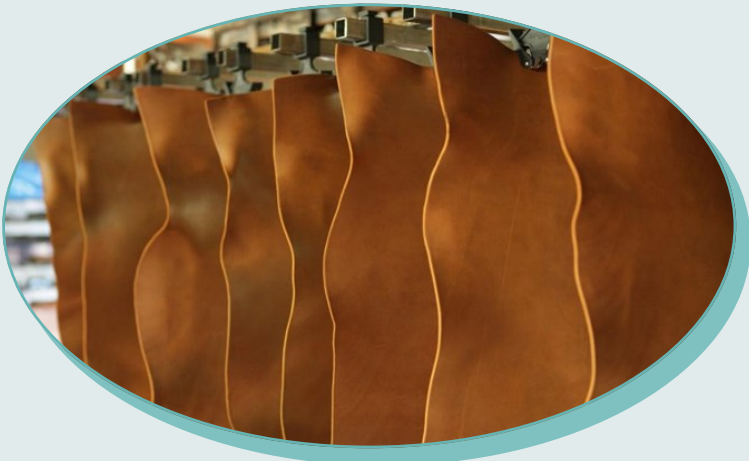
COWHIDE: Most commonly used because of availability and durability

PIG: Economical price, dries soft, breathability

GOAT: High wear resistance comparatively, flexible

DEER: High flexibility and soft, dries soft

ELK: Soft and tough, dries soft, breathability



CUTS OF LEATHER:

GRAIN: The outer smooth surface of the hide, provides a superior wear resistance compared to split leather.

SPLIT: The bottom surface of the hide, high tensile strength.

Split is divided into:

SIDE: The best part of split leather, the back, also called butt leather.

SHOULDER: From the shoulder part of the split leather. More hairy than the side, this is the second best quality of split leather. Often sub-divided into the type of selection like select shoulder, regular shoulder, etc.

BELLY: From the sides of the hide, typical thinner and more fibrous. This is the most economical portion of the split leather.

GOATSKIN



8464LH

Premium Grade Goatskin, Keystone Thumb, Leather Hem.

Sizes: XXS-XL



7950

Gold Goatskin, Straight Thumb, Thumb Strap.

Sizes: XS-XL



8464DPY

Yellow Grain Goatskin, Palm Reinforcement, Keystone Thumb.

Sizes: XS-XXL



8364

Goatskin, Quality Grade, Keystone Thumb, Color Coded Hem.

Sizes: S-XXL

STYLE NUMBER	HIDE	LEATHER GRADE	THUMB	CUFF	SIZE
8464LH	GOAT	PREMIUM	KEYSTONE	LEATHER HEM	XXS-XL
7950	GOAT	PREMIUM	STRAIGHT	LEATHER HEM	XS-XL
8464DPY	GOAT	PREMIUM	KEYSTONE	LEATHER HEM	XS-XXL
8364	GOAT	QUALITY	KEYSTONE	COLOR CODED	S-XXL

DEER/ELK DRIVERS



5464LH

Premium Grade Deerskin, Keystone Thumb, Leather Hem.
Sizes: XXS-XXL



8564

Premium Grade Elk Skin, Keystone Thumb.
Sizes: XS-XXL

5364LH

Quality Grade Deerskin, Keystone Thumb, Leather Hem.
Sizes: XS-XL

8564DP

Premium Elk Skin driver, Double Palm, Keystone Thumb, Leather Hem.
Sizes: XS-XXL

STYLE NUMBER	HIDE	LEATHER GRADE	THUMB	CUFF	SIZE
5464LH	DEER	PREMIUM	KEYSTONE	LEATHER HEM	XXS-XXL
5364LH	DEER	QUALITY	KEYSTONE	LEATHER HEM	XS-XL
8564	ELK	PREMIUM	KEYSTONE	LEATHER HEM	XS-XXL
8564DP	ELK	PREMIUM	KEYSTONE	LEATHER HEM	XS-XXL

COWHIDE DRIVERS



3210

Select Russet, Split
Shoulder Leather, Straight
Thumb.

Sizes: S-XL



3464LH

Split Driver, Cream Color,
Keystone Thumb,
Leather Hemmed.

Sizes: XS-XXL



4464LH

Premium Grain Cowhide,
Keystone Thumb,
Leather Hem.

Sizes: XS-XXL



4424LH

Premium Grain Cowhide,
Pull Strap Back,
Keystone Thumb.

Sizes: XS-XL



4420

Premium Grain
Cowhide, Pull Strap
Back, Straight Thumb.

Sizes: S-XL



4324BT

Full Grain Driver, Keystone
Thumb, Ball and Tape Back.

Sizes: S-XL

STYLE NUMBER	HIDE	LEATHER GRADE	THUMB	CUFF	SIZE
3210	COWHIDE	SELECT	STRAIGHT	COLOR CODED	S-XL
3464LH	COWHIDE	SELECT	KEYSTONE	LEATHER HEM	XS-XL
4464LH	COWHIDE	PREMIUM	KEYSTONE	LEATHER HEM	XS-XXL
4424LH	COWHIDE	PREMIUM	KEYSTONE	LEATHER HEM	XS-XL
4420	COWHIDE	PREMIUM	STRAIGHT	COLOR CODED	S-XL
4324BT	COWHIDE	SELECT	KEYSTONE	COLOR CODED	S-XL

COWHIDE DRIVERS



5320
Premium Grain Cowhide,
Wing Thumb, Natural
Cotton Drill Back.
Sizes: S-XL



4464DP
Premium Grain
Cowhide, Keystone
Thumb, Double Palm.
Sizes: S-XXL



4424DPK
Premium Grain Cowhide,
Keystone Thumb,
Palm Reinforcement,
Kevlar® Sewn.
Sizes: S-XL



4360/CAN5
Grain Cowhide, Straight
Thumb, 5" PE Cuff.
Sizes: M-XL



4335
B Grade Grain Cowhide, Wing Thumb.
Sizes: S-XXL

4235
Regular Grade Grain Cowhide, Wing Thumb.
Sizes: S-XL

STYLE NUMBER	HIDE	LEATHER GRADE	THUMB	CUFF	SIZE
5320	COWHIDE	PREMIUM	WING	COLOR CODED	S-XL
4464DP	COWHIDE	PREMIUM	KEYSTONE	LEATHER HEM	S-XXL
4424DPK	COWHIDE	PREMIUM	KEYSTONE	LEATHER HEM	S-XL
4360/CAN5	COWHIDE	B GRADE	STRAIGHT	COLOR CODED	M-XL
4335	COWHIDE	B GRADE	WING	COLOR CODED	S-XXL
4235	COWHIDE	REGULAR	WING	COLOR CODED	S-XL

COWHIDE DRIVERS



4360

B Grade Grain Cowhide, Straight Thumb.

Sizes: XS-XXL

4260

Regular Grade Grain Cowhide, Straight Thumb.

Sizes: S-XXL

4060

Standard Grain Cowhide, Straight Thumb.

Sizes: S-XXL



4364

B Grade Grain Cowhide, Keystone Thumb.

Sizes: XS-5XL

4264

Regular Grade Grain Cowhide, Keystone Thumb.

Sizes: XS-XXL

4064

Standard Grain Cowhide, Keystone Thumb.

STYLE NUMBER	HIDE	LEATHER GRADE	THUMB	CUFF	SIZE
4360	COWHIDE	B GRADE	STRAIGHT	COLOR CODED	XS-XXL
4260	COWHIDE	REGULAR	STRAIGHT	COLOR CODED	S-XXL
4060	COWHIDE	STANDARD	STRAIGHT	COLOR CODED	S-XXL
4364	COWHIDE	B GRADE	KEYSTONE	COLOR CODED	XS-5XL
4264	COWHIDE	REGULAR	KEYSTONE	COLOR CODED	XS-XXL
4064	COWHIDE	STANDARD	KEYSTONE	COLOR CODED	S-XXL

COWHIDE DRIVERS



4364SBK

B Grade Grain Leather Palm, Split Back, Keystone Thumb, Leather Hem, Kevlar® Sewn.
Sizes: S-XL



4364PSB

B Grade Grain Cowhide, Reinforced Palm, Keystone Thumb, Split Back.
Sizes: S-XXL

4264SB

Regular Grade Grain Driver, Keystone Thumb, Split Back.
Sizes: XS-XXL



4335SB

B Grade Grain Leather Palm, Split Back, Wing Thumb.
Sizes: S-XL



4264LBSB

Regular Grade Grain Driver, Light Brown, Split Back, Keystone Thumb.
Sizes: S-XXL



3264

Select Pearl, Split Shoulder Leather, Keystone Thumb.
Sizes: XS-XL

STYLE NUMBER	HIDE	LEATHER GRADE	THUMB	CUFF	SIZE
4364SBK	COWHIDE	B GRADE	KEYSTONE	LEATHER HEM	S-XL
4264SB	COWHIDE	REGULAR	KEYSTONE	COLOR CODED	XS-XXL
4364PSB	COWHIDE	B GRADE	KEYSTONE	COLOR CODED	S-XXL
4335SB	COWHIDE	B GRADE	WING	COLOR CODED	S-XL
4264LBSB	COWHIDE	REGULAR	KEYSTONE	COLOR CODED	S-XXL
3264	COWHIDE	SELECT	KEYSTONE	COLOR CODED	XS-XL

PIGSKIN & SYNTHETIC DRIVERS



6464
Premium Grain Pigskin,
Keystone Thumb.
Sizes: S-XL



6460
Grain Pigskin, Straight Thumb.
Sizes: S-XL



6364
Regular Grain Pigskin,
Keystone Thumb.
Sizes: S-XXL



6464LHK
Premium Grade Pigskin,
Keystone Thumb, Leather
Hem, Kevlar® Sewn.
Sizes: XS-XXL



MS4
Full Synthetic Leather Driver,
Keystone Thumb.
Sizes: XS-XL

MS4SB
Synthetic Leather Driver, Lycra Back,
Keystone Thumb.
Sizes: S-XL

STYLE NUMBER	HIDE	LEATHER GRADE	THUMB	CUFF	SIZE
6464	PIG	PREMIUM	KEYSTONE	COLOR CODED	S-XL
6364	PIG	REGULAR	KEYSTONE	COLOR CODED	S-XXL
6464LHK	PIG	PREMIUM	KEYSTONE	LEATHER HEM	XS-XXL
6460	PIG	PREMIUM	STRAIGHT	COLOR CODED	S-XL
MS4	SYNTHETIC	N/A	KEYSTONE	COLOR CODED	XS-XL
MS4SB	SYNTHETIC	N/A	KEYSTONE	COLOR CODED	S-XL

PIGSKIN DRIVERS



6464KWSR

Grain Pigskin Driver, Keystone Thumb,
3M Reflective Tape, Orange Mesh Back.
Sizes: S-XXL



GHV64

Grain Pigskin, 3M Reflective Tape,
Keystone Thumb, Green Mesh Back.
Sizes: S-XXL



GHV64BT

Grain Pigskin, 3M Reflective Tape,
Green Nylon Back and Safety Cuff.
Sizes: S-XXL

STYLE NUMBER	HIDE	LEATHER GRADE	THUMB	CUFF	SIZE
6464KWSR	PIG	REGULAR	KEYSTONE	COLOR CODED	S-XXL
GHV64	PIG	REGULAR	KEYSTONE	COLOR CODED	S-XXL
GHV64BT	PIG	REGULAR	KEYSTONE	COLOR CODED	S-XXL

HI VIS DRIVERS

4364FT

B Grade Grain Cowhide, Keystone Thumb, Orange Hi-Vis Finger Tips.

Sizes: S-XXL



4364HVOF

B Grade Grain Cowhide, Keystone Thumb, Orange Hi-Vis Finger Tips, "WATCH YOUR HANDS" Logo.

Sizes: XS-XXL



6364HVFTLO

Grain Pigskin, Keystone Thumb, Orange Hi-Vis Finger Tips, "WATCH YOUR HANDS" Logo.



4364GHV

B Grade Grain Cowhide, Keystone Thumb, Green Hi-Vis Finger Tips, "WATCH YOUR HANDS" Logo.

Sizes: S-XXL

STYLE NUMBER	HIDE	LEATHER GRADE	THUMB	CUFF	SIZE
4364FT	COWHIDE	B GRADE	KEYSTONE	COLOR CODED	S-XXL
4364HVOF	COWHIDE	B GRADE	KEYSTONE	COLOR CODED	XS-XXL
6364HVFTLO	PIGSKIN	REGULAR	KEYSTONE	COLOR CODED	S-XXL
4364GHV	COWHIDE	B GRADE	KEYSTONE	COLOR CODED	S-XXL

LINED DRIVERS



9-4360N

B Grade Grain Cowhide,
Straight Thumb, Cotton
Thermal Lined.
Sizes: S-XL



9-4264R

Grain Cowhide, Keystone Thumb,
Red Fleece Lined.
Sizes: S-3XL

9-4364R

B Grade Grain Cowhide, Keystone
Thumb, Red Fleece Lined.
Sizes: S-XL



9-4364PSB

Grain Cowhide Leather Palm, Split
Back, Keystone Thumb,
Pile Lined, Leather Hem.
Sizes: S-XXL



9-4464LHT

Premium Grain Cowhide, Keystone
Thumb, Thinsulate™ Lined, Leather Hem.
Sizes: XS-XXL

STYLE NUMBER	HIDE	LEATHER GRADE	THUMB	CUFF	SIZE
9-4360N	COWHIDE	B GRADE	STRAIGHT	COLOR CODED	S-XL
9-4264R	COWHIDE	REGULAR	KEYSTONE	COLOR CODED	S-3XL
9-4364R	COWHIDE	B GRADE	KEYSTONE	COLOR CODED	S-XL
9-4364PSB	COWHIDE	B GRADE	KEYSTONE	LEATHER HEM	S-XXL
9-4464LHT	COWHIDE	PREMIUM	KEYSTONE	LEATHER HEM	XS-XXL

LINED DRIVERS



9-6464R

Grain Pigskin, Keystone Thumb,
Red Fleece Lined.
Sizes: XS-XXL



9-6464LHKT

Premium Grain Pigskin, Keystone
Thumb, 100 Gram
3M Thinsulate™ Lined, Kevlar®
Sewn, Leather Hem.
Sizes: XS-XXL



9-4364FTC

B Grade Grain Cowhide,
Keystone Thumb,
Orange Hi-Vis Finger
Tips, 40 Gram
Thinsulate™ Lined.
Sizes: S-XXL



9-GHV64KW

Grain Pigskin, 3M Reflective
Tape, Green Nylon Back, Knit
Wrist, TR2 Lining.
Sizes: S-XXL



9-5275HV

Premium Grain Pigskin, 3M Reflective
Tape, Lined, Orange Back, Knit Wrist.
Sizes: S-XL

STYLE NUMBER	HIDE	LEATHER GRADE	THUMB	CUFF	LINING	SIZE
9-6464R	PIG	PREMIUM	KEYSTONE	COLOR CODED	FLEECE	XS-XXL
9-6464LHKT	PIG	PREMIUM	KEYSTONE	LEATHER HEM	THINSULATE	XS-XXL
9-GHV64KW	PIG	PREMIUM	WING	KNIT WRIST	TR2	S-XXL
9-5275HV	PIG	PREMIUM	WING	KNIT WRIST	TR2	S-XL
9-4364FTC	COW- HIDE	B GRADE	KEYSTONE	COLOR CODED	THINSULATE	S-XXL

LINED DRIVERS



9-7950B

Premium Gold Goatskin, Straight Thumb, Thumb Strap, Thinsulate™ Lined.
Sizes: XS-XL



9-8464LHT

Premium Grain Goatskin, Keystone Thumb, 100 Gram Thinsulate™ Lined, Leather Hem.
Sizes: XS-XL



9-8464KW

Goatskin with 100 Gram 3M Thinsulate™ Lined, Black Knit Wrist.
Sizes: S-2XL



9-5465C100

Premium Deerskin with 100 Gram 3M Thinsulate™ Lined, Leather Hem.
Sizes: S-2XL

STYLE NUMBER	HIDE	LEATHER GRADE	THUMB	CUFF	LINING	SIZE
9-7950B	GOAT	PREMIUM	STRAIGHT	LEATHER HEM	THINSULATE	XS-XL
9-8464LHT	GOAT	PREMIUM	KEYSTONE	LEATHER HEM	THINSULATE	XS-XL
9-8464KW	GOAT	PREMIUM	KEYSTONE	LEATHER HEM	THINSULATE	S-XXL
9-5465C100	DEER	PREMIUM	KEYSTONE	LEATHER HEM	THINSULATE	S-XXL

LINED DRIVERS



9-4464LHR

Premium Grain Cowhide,
Keystone Thumb, Red Fleece
Lined, Leather Hem.
Sizes: S-XL



9-3210P

Russet Split Shoulder Leather,
Straight Thumb, Pile Lined.
Sizes: S-XL



9-3214R

Russet Split Shoulder Leather, Keystone
Thumb, Red Fleece Lined.
Sizes: XS-XL



9-5275SR

Grain Pigskin, 3M Reflective Tape, Lined,
Orange Back, Orange Knit Wrist.
Sizes: S-XXL

STYLE NUMBER	HIDE	LEATHER GRADE	THUMB	CUFF	LINING	SIZE
9-4464LHR	COWHIDE	PREMIUM	KEYSTONE	LEATHER HEM	FLEECE	S-XL
9-3210P	COWHIDE	B GRADE	STRAIGHT	COLOR CODED	PILE	S-XL
9-3214R	COW	B GRADE	KEYSTONE	COLOR CODED	FLEECE	XS-XL
9-5275SR	PIG	PREMIUM	WING	KNIT WRIST	THINSULATE	S-XXL

LEATHER PALMS

1050

Regular Shoulder Leather,
Stripe Fabric Back, Clute Pattern,
Knit Wrist, Men's.

1049-Ladies



1040

Leather Palm, Stripe Fabric Back,
Clute Pattern, 2.5" Pasted Cuff.



1060

Clute Pattern, Stripe Fabric
Back, Blue Knit Wrist, Men's.

1059-Ladies

1075

Clute Pattern, Yellow Canvas
Back, Knit Wrist, Men's.

1074-Ladies



1140

Regular Shoulder Leather, Gunn
Pattern, 2.5" Washable Safety Cuff.
Sizes: S- XL

STYLE NUMBER	HIDE	LEATHER GRADE	THUMB	CUFF	SIZE
1050	COW	REGULAR	WING	KNIT WRIST	ONE SIZE
1049	COW	REGULAR	WING	KNIT WRIST	LADIES
1040	COW	REGULAR	WING	2.5" PASTED	ONE SIZE
1060	COW	REGULAR	STRAIGHT	KNIT WRIST	ONE SIZE
1059	COW	REGULAR	STRAIGHT	KNIT WRIST	LADIES
1075	COW	REGULAR	STRAIGHT	KNIT WRIST	ONE SIZE
1074	COW	REGULAR	STRAIGHT	KNIT WRIST	LADIES
1140	COW	REGULAR	WING	2.5" SAFETY	S- XL

LEATHER PALMS



1160

Regular Shoulder Leather, Gunn Pattern,
2.5" Rubberized Safety Cuff.

Sizes: XS-XXL

1160LHO-Left Hand Only

Sizes: L & XL

1160RHO-Right Hand Only

Sizes: L & XL

1161S

Economy Leather Palm, 4.5" Pasted Cuff.

1160PE

Leather Palm, 2.5" P.E. Cuff.

Sizes: S, L & XL



1250

Full Feature Gunn Pattern, Yellow
Canvas Back, 2.5" Rubberized
Safety Cuff.

Sizes: S-XXL

STYLE NUMBER	HIDE	LEATHER GRADE	THUMB	CUFF	SIZE
1160	COW	REGULAR	WING	2.5" SAFETY	XS-XXL
1160LHO	COW	REGULAR	WING	2.5" SAFETY	L-XL
1160RHO	COW	REGULAR	WING	2.5" SAFETY	L-XL
1160PE	COW	REGULAR	WING	2.5" PE	S,L-XL
1161S	COW	REGULAR	WING	4.5" PASTED	ONE SIZE
1250	COW	B GRADE	WING	2.5" SAFETY	S-XXL

LEATHER PALMS

1260

Full Feature Gunn Pattern,
2.5" Rubberized Safety Cuff.

1261

4.5" Gauntlet Cuff.



1270P

Green Leather Double Palm,
Joint Construction, 2.5"
Rubberized
Safety Cuff.

Size: L-2XL

1270PW-Ladies

1271P

4.5" Gauntlet Cuff.



1358

Full Leather Back, 2.5"
Rubberized Safety Cuff.

Sizes: S-XXL

1358G

4.5" Gauntlet Cuff.

Sizes: S-XXL

STYLE NUMBER	HIDE	LEATHER GRADE	THUMB	CUFF	SIZE
1260	COW	B GRADE	WING	2.5" SAFETY	ONE SIZE
1261	COW	B GRADE	WING	4.5" GAUNTLET	ONE SIZE
1270P	COW	B GRADE	WING	2.5" SAFETY	L-2XL
1270PW	COW	B GRADE	WING	2.5" SAFETY	LADIES
1271P	COW	B GRADE	WING	4.5" GAUNTLET	ONE SIZE
1358	COW	A GRADE	WING	2.5" SAFETY	S-XXL
1358G	COW	A GRADE	WING	4.5" GAUNTLET	S-XXL

LEATHER PALMS



1360

Full Feature Gunn Cut,
2.5" Rubberized Safety Cuff.
Sizes: S-XL

1361

4.5" Gauntlet Cuff.



1360KW

Full Feature Gunn Cut, Stripe
Fabric Back, Knit Wrist.



1360IDO

Inside Double Palm, Orange
Canvas Back, 2.5" Rubberized
Safety Cuff.
Sizes: S-XXL



1370

Green Leather Double Palm,
2.5" Rubberized Safety Cuff.
Sizes: S-XL

1371

4.5" Gauntlet Cuff.

STYLE NUMBER	HIDE	LEATHER GRADE	THUMB	CUFF	SIZE
1360	COW	A GRADE	WING	2.5" SAFETY	S-XL
1360IDO	COW	A GRADE	WING	2.5" SAFETY	S-XXL
1361	COW	A GRADE	WING	4.5" SAFETY	ONE SIZE
1360KW	COW	A GRADE	WING	KNIT WRIST	ONE SIZE
1370	COW	A GRADE	WING	2.5" SAFETY	S-XL
1371	COW	A GRADE	WING	4.5" SAFETY	ONE SIZE

LEATHER PALMS



1245
Full Feature Gunn Pattern,
Knit Wrist.
Sizes: M-XL



1490
Double Leather Palm and Fingers,
2.5" Rubberized Safety Cuff,
Kevlar® Sewn.
Sizes: S-XL



1420
Full Leather Back, 2.5"
Rubberized Safety Cuff,
Kevlar® Sewn.
Sizes: S-XL



1400
3/4 Leather Back, 2.5" Rubberized
Safety Cuff, Kevlar® Sewn.
Sizes: L & XL

1421
4.5" Gauntlet Cuff, Kevlar®
Sewn.
Sizes: L & XL



1440
Full Feature Gunn Cut, 2.5"
Rubberized Safety Cuff, Kevlar® Sewn.
Sizes: S-XL

STYLE NUMBER	HIDE	LEATHER GRADE	THUMB	CUFF	SIZE
1245	COW	B GRADE	WING	KNIT WRIST	M-XL
1490	COW	SIDE SPLIT	WING	2.5" SAFETY	S-XL
1420	COW	SIDE SPLIT	WING	2.5" SAFETY	S-XL
1421	COW	SIDE SPLIT	WING	4.5" SAFETY	L-XL
1400	COW	SIDE SPLIT	WING	2.5" SAFETY	L-XL
1440	COW	SIDE SPLIT	WING	2.5" SAFETY	S-XL

LEATHER PALMS



5110

Split Pigskin Leather Palm, 2.5" Cuff.

5111

Split Pigskin Leather Palm, 4.5" Cuff.



5210

Regular Grade Grain Cowhide, 2.5"

Rubberized Safety Cuff.

Sizes: S-XL



5210SB

Grain Cowhide, 2.5" Rubberized
Safety Cuff, Split Back.

Sizes: S-XXL

5211SB

4.5" Gauntlet Cuff.

Sizes: S-XL



5220

Premium Grain Cowhide
2.5" Rubberized Safety Cuff.

Sizes: S-XL

5221

4.5" Gauntlet Cuff.

Sizes: S-XL

STYLE NUMBER	HIDE	LEATHER GRADE	THUMB	CUFF	SIZE
5110	COW	B GRADE	WING	2.5" SAFETY	ONE SIZE
5111	COW	B GRADE	WING	4.5" SAFETY	ONE SIZE
5210	COW	B GRADE	WING	2.5" SAFETY	S-XL
5210SB	COW	B GRADE	WING	2.5" SAFETY	S-XXL
5211SB	COW	B GRADE	WING	4.5" GAUNTLET	S-XL
5220	COW	A GRADE	WING	2.5" SAFETY	S-XL
5221	COW	A GRADE	WING	4.5" SAFETY	S-XL

LINED LEATHER PALMS



9-5275TH

Premium Grain Pigskin,
3M Thinsulate™ Lined,
Safety Cuff.
Sizes: S-XXL



9-5275THK5

Premium Grain Pigskin,
40 Gram 3M Thinsulate™
Lined, 5" Knit Wrist.
Sizes: S-XXL

STYLE NUMBER	HIDE	LEATHER GRADE	THUMB	CUFF	SIZE
9-5275TH	PIG	PREMIUM	WING	2.5" SAFETY	S-XXL
9-5275THK5	PIG	PREMIUM	WING	5" KNIT WRIST	S-XXL

WELDERS



Seattle Glove's welding products include an assortment of welding apparel and accessories. So whether you need welding jackets, coveralls or gloves, Seattle Glove has it!



WELDERS



7380K

Blue Leather, Reinforced Straight Thumb, Kevlar® Sewn.

7380K-LHO

Left Hand Only.



7470K

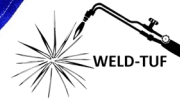
Blue Side Split, Sock Lined, Kevlar® Sewn, Reinforced Thumb and Palm.

7370K

Blue Shoulder Leather, 5MM Foam Lined, Kevlar® Sewn.

7270K

Select Blue Shoulder Leather, Foam Lined, Kevlar® Sewn.



7210

Select Pearl Shoulder Leather, Wing Thumb, Fully Lined.

7110

Regular Pearl Shoulder Leather.



770K

Premium Mig, Split Back, Split Reinforcement, Kevlar® Sewn.

Sizes: S-2XL



CR772K

Goatskin Leather, Kevlar® Stitching and Lining, Wing Thumb, Cowhide Split Cuff.

Sizes: S-2XL



STYLE NUMBER	HIDE	COLOR	THUMB	KEVLAR	SIZE
7380K	COW	BLUE	STRAIGHT	YES	ONE SIZE
7470K	COW	BLUE	WING	YES	ONE SIZE
7270K	COW	BLUE	WING	YES	ONE SIZE
7210	COW	PEARL	WING	NO	ONE SIZE
7110	COW	PEARL	WING	NO	ONE SIZE
770K	COW	YELLOW	WING	YES	S-2XL
CR772K	GOAT	A GRADE	WING	YES	S-2XL

WELDERS



5420LCK

Premium Grain Cowhide,
Split Leather, 4.5" Gauntlet
Cuff, Kevlar® Sewn.
Sizes: XS-XXL



5420SC

Premium Grain Cowhide
Leather Palm and Back, Wing
Thumb, Split Safety Cuff.
Sizes: S-XXL



5475LCK

Premium Grain Cowhide,
Straight Thumb, Split Leather
Gauntlet Cuff, Kevlar® Sewn.
Sizes: XS-XXL

5220LCK

B Grade Grain Cowhide.
Sizes: S-XL



8465LCK

Premium Grain Goatskin, 4.5"
Blue Split Cuff, Kevlar® Sewn.
Sizes: S-XL



H5565K

Premium Elk Skin Lineman's
Glove, Kevlar® Sewn.
Sizes: S-XL



85

Top Grain Gold Elk Skin,
Insulated Back, Kevlar® Sewn,
Fully Welted Seams, Thumb
Strap, Leather Cuff.
Sizes: S-XL

STYLE NUMBER	HIDE	GRADE	THUMB	KEVLAR	SIZE
5420LCK	COW	PREMIUM	WING	YES	XS-XXL
5220LCK	COW	PREMIUM	WING	YES	S-XL
5420SC	COW	PREMIUM	WING	NO	S-XXL
5475LCK	COW	PREMIUM	STRAIGHT	YES	XS-XXL
8465LCK	GOAT	PREMIUM	WING	YES	S-XL
H5565K	ELK	PREMIUM	WING	YES	S-XL
85	ELK	PREMIUM	STRAIGHT	YES	S-XL

WELDERS



7250K

Russet Shoulder Leather,
Kevlar® Sewn, Sock Lined,
Wing Thumb.

7250

Russet Shoulder Leather,
Sock Lined, Wing Thumb.



7480KALM

Blue Premium Cowhide
Leather, Kevlar® Sewn,
Aluminized Rayon Back for
Radiant Heat Protection.



7475K

Russet Side Split, Kevlar®
Sewn, Sock Lined,
Reinforced Palm.

7275K

Select Russet Shoulder
Leather, Kevlar® Sewn.



7480K-RY

Side Split, Black Fire Retardant
Lining, Kevlar® Sewn, Reinforced
Straight Thumb.
Sizes: S-XXL



CR773K-IMP

A Grade Goatskin Leather,
Kevlar® Sewn.
ANSI: A6
Sizes: S-2XL



7280K

Reinforced Straight Thumb
and Palm, Kevlar® Sewn.

STYLE NUMBER	HIDE	GRADE	THUMB	KEVLAR	SIZE
7250K	COW	SPLIT	WING	YES	ONE SIZE
7250	COW	SPLIT	WING	NO	ONE SIZE
7475K	COW	SPLIT	WING	YES	ONE SIZE
7275K	COW	SPLIT	STRAIGHT	YES	ONE SIZE
7480K-RY	COW	SPLIT	STRAIGHT	YES	S-XXL
7280K	COW	SPLIT	STRAIGHT	YES	ONE SIZE
7480KALM	COW	PREMIUM	WING	YES	ONE SIZE
CR773K-IMP	GOAT/COW	A GRADE	LEATHER	ANSI A6	S-2XL

MECHANICS



Our mechanics gloves offer versatile applications. Ensure your hands are shielded from hazards while maintaining great flexibility and dexterity.



MECHANICS



HVGMC20

Green Hi-Vis, Black Synthetic Leather, Foam Palm.

Sizes: S-XXL

9-HVGMC20

Green Hi-Vis, Black Synthetic Leather, Foam Palm Padding, Lined.

Sizes: S-XXL



9-BMC20

Black Mechanic Style, Black Synthetic Leather, Foam Palm, Waterproof, Lined.

Sizes: S-XXL



9-BKHV120

Black Mechanic Style, Black Synthetic Leather, Foam Palm, 120 Gram Lined.

Sizes: S-XXL



9-HOHV120

Orange Mechanic Style, Black Synthetic Leather, Foam Palm, 120 Gram Lined.

Sizes: S-XXL



9-HGV120

Green Mechanic Style, Black Synthetic Leather, Foam Palm, 120 Gram Lined.

Sizes: S-XXL

STYLE NUMBER	MATERIAL	PALM	CUFF	SIZE
HVGMC20	SYNTHETIC	FOAM	VELCRO	S-XXL
9-HVGMC20	SYNTHETIC	FOAM	VELCRO	S-XXL
9-BMC20	SYNTHETIC	FOAM	VELCRO	S-XXL
9-BKHV120	SYNTHETIC	FOAM	VELCRO	S-XXL
9-HOHV120	SYNTHETIC	FOAM	VELCRO	S-XXL
9-HGHV120	SYNTHETIC	FOAM	VELCRO	S-XXL

MECHANICS

MCG40

Premium Split Goatskin, Double Palm,
Black Spandex Back.
Sizes: S-XXL



MC18

Reinforced Thumb and
Fingertips, Knuckle Band,
Anti-Vibration Palm, Blue
Spandex Back, Velcro
Closure.
Sizes: S-XXL



MCV20

Synthetic Leather, Blue Spandex
Back, Velcro Closure.
Sizes: S-XXL

MCP48

Premium Grain Pigskin, Blue Spandex
Back, Velcro Strap.
Sizes: XS-XXL



MCDVB25

Black Deerskin, Black Spandex Back,
Anti-Vibration Gel Palm, Velcro Closure.
Sizes: M-XXL



MCDV24

Premium Deerskin Palm,
Anti-Vibration Gel Palm,
Reinforced Thumb and Finger
Tips, Black Spandex Back,
Velcro Closure.
Sizes: S-XXL

STYLE NUMBER	MATERIAL	PALM	CUFF	SIZE
MCG40	GOAT	DOUBLE	VELCRO	S-XXL
MCV20	SYNTHETIC	REINFORCED	VELCRO	S-XXL
MCP48	PIG	REGULAR	VELCRO	XS-XXL
MC18	SYNTHETIC	REINFORCED	VELCRO	S-XXL
MCDV24	DEER	GEL	VELCRO	XS-XXL
MCDVB25	DEER	GEL	VELCRO	M-XXL



GR2012

Green Hi-Vis, Molded TPR Fingers, Synthetic Leather, Foam Palm, Slip On Style.
Sizes: S-3XL



OR200

Orange Hi-Vis, Molded TPR Fingers, Synthetic Leather, Velcro Closure.

Sizes: S-XXL

OR500

Orange Hi-Vis, Molded TPR Fingers, Synthetic Leather, Foam Palm

Sizes: S-3XL



4064IMP

Standard Grain Cowhide, Keystone Thumb.

ANSI Impact 1

Sizes: XS-XXL



CR8465DP

Goatskin grain, HPPE lining, Wing Thumb, Double Palm.

ANSI: A4, Impact 1

Sizes: S-3XL



CR5

Goatskin Grain Glove.

ANSI: A5

ANSI Imp Level 1 — Knuckle

ANSI Imp Level 2 — Finger

Sizes: S-2XL



CR6

Goatskin Grain Glove.

ANSI: A6

ANSI Imp Level 2 — Knuckle/

Finger/Thumb

Sizes: S-2XL

STYLE NUMBER	MATERIAL	PALM TYPE	CUFF	CUT LEVEL	SIZE
GR2012	SYNTHETIC	EVA FOAM	SLIP ON	EN 3233	S-3XL
OR200	SYNTHETIC	EVA FOAM	VELCRO	EN 3233	S-XXL
OR500	SYNTHETIC	EVA FOAM	SLIP ON	EN 3233	S-3XL
4064IMP	COWHIDE	SINGLE PALM	SLIP ON	EN338: 3341F	S-XXL
CR8465DP	GOATSKIN	DOUBLE PALM	SLIP ON	EN338: 3341F	S-3XL
CR5	GOATSKIN	SINGLE PALM	SLIP ON	ANSI: A5	S-3XL
CR6	GOATSKIN	SINGLE PALM	KNIT WRIST	ANSI: A6	S-3XL

IMPACTS



HVG182IMP

Fluorescent Green,
Corduroy Palm, Knit Wrist
ANSI: A2, Impact 1



HV4IMP

Cut Resistant Knit, Nitrile
Palm, 13 Gauge.
ANSI: A4, Impact 1
Sizes: XS-3XL



HVD1844IMP

Cut Resistant Knit, Dotted
Nitrile Palm, 18 Gauge.
ANSI: A4, Impact 1
Sizes:XS-2XL



GBN5

Cut Resistant Knit, Nitrile
Coated Palm, 13 Gauge.
ANSI: A5
Sizes:S-2XL



HVD1884IMP2

Cut Resistant Knit, Dotted Nitrile
Palm, 18 Gauge.
ANSI: A8, Impact 2
Sizes:XS-2XL



CR73YB

Goatskin, HPPE Lining,
Wing Thumb.
ANSI: A7, Impact 3
Sizes: S-2XL

STYLE NUMBER	MATERIAL	PALM TYPE	CUFF	CUT LEVEL	SIZE
HVG182IMP	COTTON/POLY	HI VIS GREEN	KNIT WRIST	ANSI: A2	ONE SIZE
HV4IMP	MIX	NITRILE	KNIT WRIST	ANSI: A4	XS-3XL
HVD1844IMP	HPPE	DOTTED NITRILE	KNIT WRIST	ANSI: A4	XS-2XL
HVD1884IMP2	HPPE	DOTTED NITRILE	KNIT WRIST	ANSI: A8	XS-2XL
GBN5	HPPE	NITRILE	KNIT WRIST	ANSI: A5	S-2XL
CR73YB	GOATSKIN	SINGLE PALM	SLIP ON	ANSI: A7	S-2XL



A6PVCIMP2

Fully Coated PVC with TPR Fingers and Back of Hand, Kevlar® Liner, 12" Cuff.

ANSI: A6

Sizes: L-2XL



GRKG4

Hi Visibility Green with TPR Fingers and Back of Hand. Abrasion Resistant Palm.

Sizes: S-3XL



HGLP5

Premium Goatskin with TPR Fingers and Back of Hand, Aramid liner, Velcro wrist

ANSI: A5

ANSI Imp Level 1 — Knuckle

ANSI Imp Level 2 — Finger

Sizes: S-3XL



HVNGOR5

Hi Visibility Green with TPR Fingers and Back of Hand, Orange Nitrile Palm.

ANSI: A7

Sizes: XS-3XL



GR13GC5

Hi Visibility Green with TPR Fingers and Back of Hand, Cut Resistant, Sandy Nitrile Palm.

ANSI: A8

Sizes: XS-3XL



MC13HVG N

Hi Visibility Green with TPR Fingers and Back of Hand, Sandy Nitrile Palm.

Sizes: S-3XL

STYLE NUMBER	MATERIAL	PALM	CUFF	CUT LEVEL	SIZE
A6PVCIMP2	PVC	SMOOTH	LONG	ANSI A6	L-2XL
GRKG4	SYNTHETIC	PADDED	SLIP ON	EN338: 4544	S-3XL
HGLP5	GOATSKIN	DOUBLE	VELCRO	ANSI: A5	S-3XL
HVNGOR5	SYNTHETIC	NITRILE	VELCRO KNIT	ANSI A7	XS-3XL
GR13GC5	SYNTHETIC	NITRILE	KNIT WRIST	ANSI A8	XS-3X
MC13HVG N	SYNTHETIC	NITRILE	KNIT WRIST	N/R	S-3XL

CUSTOM PRINTING



BENEFITS OF SEATTLE GLOVE CUSTOM PRINTING

Low minimums

Builds brand presence

Fast turnaround

Most products are customizable

CONVENIENT, COST EFFECTIVE, CUSTOM PRINTING

Custom printing is available on most of our products. We can customize gloves, vests, jackets and more to your specifications. We make the process fast and easy, all you have to do is provide your logo and we do the rest!

JERSEY



J2109

Brown Jersey, Clute Pattern

Sizes: Men's, XL, Ladies (**J2109W**)

J2110

Heavy Weight Brown Jersey, Clute Pattern.

Sizes: Men's and Ladies (**J2110W**)



J2114

Red Fleece Lined Brown Jersey, Slip On Style.



J2109PDM

Brown Jersey With Mini Dots, Clute Pattern, Ladies Size: (**J2109PDMW**)



J1037

Two Piece Reversible Natural Jersey.
Sizes: Men's, XL, Ladies (**J1047**)

STYLE NUMBER	MATERIAL	PATTERN	CUFF	SIZE
J2109	JERSEY	CLUTE	KNIT WRIST	MEN'S, XL, LADIES
J2110	JERSEY	CLUTE	KNIT WRIST	MEN'S, LADIES
J2109PDM	JERSEY	CLUTE	KNIT WRIST	MEN'S, LADIES
J2114	JERSEY	GUNN	SLIP ON	ONE SIZE
J1037/J1047	JERSEY	REVERSIBLE	KNIT WRIST	MEN'S, XL, LADIES

CANVAS/DOUBLE PALMS



D3018NOBT

Nap-Out, Double Palm, Band Top.

D3020NOPE

Double Palm, Nap-Out, 4.5" PE Gauntlet Cuff.

D3020NOKW

Double Palm, Nap-Out, Knit Wrist.



D3018CDKW

Nap-In Corded Double Palm, Bleached White, Knit Wrist.

D3018CDBT

Nap-In Corded Double Palm, Bleached White, Band Top.

D3020CDRKW

Corded Double Palm, Red Knit Wrist.

D20CDKW

Corduroy, Knit Wrist, Nap-In, Semi-Bleached.



D3018NI

Nap-In Double Palm, Knit Wrist.

D3018NIR

Nap-In Double Palm, Red Knit Wrist.

D3018NO

Nap-Out Double Palm, Knit Wrist.

STYLE NUMBER	MATERIAL	PALM	CUFF	SIZE
D3018NOBT	COTTON	DOUBLE PALM	BAND TOP	ONE SIZE
D3020NOPE	COTTON	DOUBLE PALM	4.5" PE	ONE SIZE
D3020NOKW	COTTON	DOUBLE PALM	KNIT WRIST	ONE SIZE
D3018CDKW	COTTON	DOUBLE PALM	KNIT WRIST	ONE SIZE
D3018CDBT	COTTON	DOUBLE PALM	BAND TOP	ONE SIZE
D3020CDRKW	COTTON	DOUBLE PALM	RED KNIT WRIST	ONE SIZE
D20CDKW	COTTON	DOUBLE PALM	KNIT WRIST	ONE SIZE
D3018NI	COTTON	DOUBLE PALM	KNIT WRIST	ONE SIZE
D3018NIR	COTTON	DOUBLE PALM	RED KNIT WRIST	ONE SIZE
D3018NO	COTTON	DOUBLE PALM	KNIT WRIST	ONE SIZE

CANVAS



C7608

8oz. Canvas Straight Thumb, Knit Wrist, Men's.

C7608-XL

C7608W-Ladies

C7610

10oz. Canvas, Straight Thumb, Men's.

C7610BT

10oz, 2" Band Top, Men's.

C7612

12oz. Canvas, Straight Thumb, Men's.

C8608PD

8oz. Canvas With Black Polka Dots, Knit Wrist, Men's.

C8608PDW-Ladies

C8610PD

10oz. Canvas With Black Polka Dots, Men's.

C8610PDC

10oz. Canvas With Orange Polka Dots, Men's.

STYLE NUMBER	MATERIAL	WEIGHT	CUFF	SIZE
C7608	COTTON	8 OZ	KNIT	MEN'S, XL, LADIES
C7610	COTTON	10 OZ	KNIT	ONE SIZE
C7610BT	COTTON	10 OZ	KNIT	ONE SIZE
C7612	COTTON	12 OZ	KNIT	ONE SIZE
C8608PD	COTTON	8 OZ	KNIT	MEN'S, LADIES
C8610PD	COTTON	10 OZ	KNIT	ONE SIZE
C8610PDC	COTTON	10 OZ	KNIT	ONE SIZE

HI-VIS COTTON



OC020-TC

Fluorescent Orange, Corded Double Palm, Cotton/Polyester Corduroy, Knit Wrist.

OC020-TCPD

Fluorescent Orange, Corduroy Double Palm, Black Dots, Knit Wrist

GC020-TC

Fluorescent Green, Corded Double Palm, Cotton/Polyester Corduroy, Knit Wrist.

GC020-TCPD

Fluorescent Green, Corduroy Double Palm, Black Dots, Knit Wrist.

STYLE NUMBER	MATERIAL	COLOR	CUFF	SIZE
OC020-TC	COTTON/POLY	HI VIS ORANGE	KNIT	ONE SIZE
OC020-TCPD	COTTON/POLY	HI VIS ORANGE	KNIT	ONE SIZE
GC020-TC	COTTON/POLY	HI VIS GREEN	KNIT	ONE SIZE
GC020-TCPD	COTTON/POLY	HI VIS GREEN	KNIT	ONE SIZE

CHORES



G318K

Heavy Weight Golden Chore Palm,
3 Finger Canvas Back, Knit Wrist.

G318BT

Heavy Weight Golden Chore Palm,
3 Finger Canvas Back, 2” Band Top.



G318G

Heavy Weight Golden Chore Palm, 3
Finger Canvas Back, Gauntlet Cuff.



G3118K

Heavy Weight Golden Chore, Knit Wrist.



G3118GK

Heavy Weight Green Chore, Knit Wrist.

STYLE NUMBER	MATERIAL	COLOR	CUFF	SIZE
G318K	COTTON	GOLD	KNIT WRIST	ONE SIZE
G318BT	COTTON	GOLD	KNIT WRIST	ONE SIZE
G318G	COTTON	GOLD	KNIT WRIST	ONE SIZE
G3118K	COTTON	GOLD	KNIT WRIST	ONE SIZE
G3118GK	COTTON	GREEN	KNIT WRIST	ONE SIZE

HOT MILLS



H532G

Heavy Weight Hot Mill, Burlap, 4.5" Plasticized Cuff.

H532KW

Heavy Weight Hot Mill, Triple Layer, Burlap, Knit Wrist.

H532BT

Heavy Weight Hot Mill, Burlap, Band Top.



HG524BT

Green Hot Mill, Double Layer, Band Top.

HG532BT

Heavy Weight Green Hot Mill, Burlap, Band Top.

HG532G

Heavy Weight Green Hot Mill, Burlap, Gauntlet Cuff

H524BT

Hot Mill, Double Layer, Band Top.

H524G

Hot Mill, Double layer, Gauntlet Cuff.

H524KW

Hot Mill, Double Layer, Knit Wrist.

STYLE NUMBER	MATERIAL	COLOR	CUFF	SIZE
H532G	COTTON	NATURAL	4.5" PLASTICIZED	ONE SIZE
H532KW	COTTON	NATURAL	KNIT WRIST	ONE SIZE
H532BT	COTTON	NATURAL	BAND TOP	ONE SIZE
H524BT	COTTON	NATURAL	BAND TOP	ONE SIZE
H524G	COTTON	NATURAL	GAUNTLET	ONE SIZE
H524KW	COTTON	NATURAL	KNIT WRIST	ONE SIZE
HG524BT	COTTON	NATURAL/GREEN	BAND TOP	ONE SIZE
HG532BT	COTTON	NATURAL/GREEN	BAND TOP	ONE SIZE
HG532G	COTTON	NATURAL/GREEN	GAUNTLET	ONE SIZE

INSPECTORS



I4800

Light Weight Lisle Inspectors, Bleached, Men's.

I4800W-Ladies

I4810

Medium Weight Lisle Inspectors, Hemmed, Men's

I4810W-Ladies

I4820

Heavy Weight Lisle Inspectors, Hemmed, Men's.

I4820W-Ladies



N4980

Full Fashion Stretch Nylon Inspectors, Hemmed, Men's.

N4980W-Ladies



I4814

14" Light Weight Lisle Inspectors, Bleached, Men's.



N4900

Stretch Nylon Inspectors, Reversible, Hemmed, Men's.

N4900W-Ladies

STYLE NUMBER	MATERIAL	COLOR	CUFF	SIZE
I4800	LISLE	WHITE	HEMMED	MEN'S & LADIES
I4810	LISLE	WHITE	HEMMED	MEN'S & LADIES
I4820	LISLE	WHITE	HEMMED	MEN'S & LADIES
I4814	LISLE	WHITE	14" HEMMED	MEN'S
N4980	NYLON	WHITE	HEMMED	MEN'S & LADIES
N4900	NYLON	WHITE	HEMMED	MEN'S & LADIES

STRING KNITS

G600

Medium Weight, Grey, Cotton/Polyester String Knit.

Sizes: S, L

G950

Heavy Weight, Grey, Cotton/Polyester String Knit.

Sizes: XS, S, L



G600D

Medium Weight Grey Knit, One Side Dots.

Sizes: S, L

G600DD

Medium Weight Grey Knit, PVC Dots On Both Sides.

Size: L



S-0319CC

Heavy Weight Orange String Knit With PVC

Honey Comb Pattern.

Sizes: S-XL



T24LI

Terrycloth String Knit, Seamless,

Reversible, Loop In, Knit Wrist.

Sizes: S, L



STYLE NUMBER	MATERIAL	COLOR	CUFF	SIZE
G600	COTTON/POLY	GREY	KNIT WRIST	S, L
G950	COTTON/POLY	GREY	KNIT WRIST	XS, S, L
G600D	COTTON/POLY/PVC	GREY	KNIT WRIST	S, L
G600DD	COTTON/POLY/PVC	GREY	KNIT WRIST	L
S-0319CC	COTTON/POLY/PVC	ORANGE	KNIT WRIST	S-XL
T24LI	TERRYCLOTH	NATURAL	KNIT WRIST	S, L

STRING KNITS



S-16

Medium Weight, Cotton/Polyester String Knit.

Sizes: S-L

S-0316

Premium Medium Weight, Cotton/Polyester String Knit.

Sizes: XS-XL

S-0320

Bleached White, Medium Weight, Cotton/Polyester String Knit.

Sizes: S-L

S-725P

100% Polyester String Knit, Medium Weight.

Sizes: S-XL

S-16D

Natural White Cotton/Polyester String Knit With PVC Dots On One Side.

Sizes: S, L

S-16DD

Natural White Cotton/Polyester String Knit With PVC Dots On Both Sides.

Sizes: S, L

S-0316D

Natural White Cotton/Polyester String Knit With PVC Dots On One Side. Premium Quality.

Sizes: S, L

S-0316DD

Natural White Cotton/Polyester String Knit With PVC Dots On Both Sides. Premium Quality.

Sizes: S, L, XL

STYLE NUMBER	MATERIAL	COLOR	CUFF	SIZE
S-16	COTTON/POLY	NATURAL	KNIT WRIST	S-L
S-3016	COTTON/POLY	NATURAL	KNIT WRIST	XS-XL
S-0320	COTTON/POLY	BLEACHED WHITE	KNIT WRIST	S-L
S-725P	POLYESTER	NATURAL	KNIT WRIST	S-XL
S-16D	COTTON/POLY/PVC	NATURAL	KNIT WRIST	S, L
S-16DD	COTTON/POLY/PVC	NATURAL	KNIT WRIST	S, L
S-0316D	COTTON/POLY/PVC	NATURAL	KNIT WRIST	S, L
S-0316DD	COTTON/POLY/PVC	NATURAL	KNIT WRIST	S, L, XL

COATING BASICS

A COMPLETE LINE OF COATINGS

Coating grip is essential in preventing injury to hands and arms. Seattle Glove offers many different glove styles and coatings to protect you!



MICRO-FOAM (DOTS)

- Thin and tough-wearing
- Maximum breathability
- Good Grip



MICRO-FOAM

- Thin and tough-wearing
- Maximum breathability



CRINKLE

- Flexible and tough
- No breathability



SMOOTH

- Thin, high tactility
- Fair breathability

COATING	COATING MATERIAL	SUCTION ACTION ON WET/ OILY	BREATHABILITY	LIQUID PENE- TRATION
MICRO-FOAM	NITRILE	SUPERIOR, WET OR OILY	MAXIMUM	MINIMAL
FOAM	NITRILE	FAIR, WET OR OILY	FAIR	SOME
CRINKLE	LATEX	GOOD, WET SURFACES	NONE/SLIGHT	NONE
SMOOTH	NITRILE	POOR, WET OR OILY	NONE/SLIGHT	NONE
SMOOTH	POLYURETHANE	GOOD, WET OR OILY	FAIR	SOME



COATED GLOVES



200
Poly/Cotton, Black Latex
Coated, Jersey Liner,
10 Gauge.
Sizes: S-XL



300BLP
Black Latex Palm and
Fingertips, Fluorescent Yellow
Cotton/Polyester Shell,
10 Gauge.
Sizes: S-XL



40
Economy Blue Latex Palm and
Fingertips, Natural White
Cotton/Polyester Knit Liner,
10 Gauge.
Sizes: S-XL



400
Blue Latex Palm and
Fingertips, Natural White
Cotton/Polyester Knit Liner,
10 Gauge.
Sizes: S-XL



LX15R
Red Nylon Shell, Black
Rubber Latex Palm,
15 Gauge.
Sizes: S-XL

STYLE NUMBER	PALM	COLOR	CUFF	SIZE
200	LATEX	GREY	KNIT WRIST	S-XL
300BLP	LATEX	GREEN/BLACK	KNIT WRIST	S-XL
40	LATEX	BLUE/WHITE	KNIT WRIST	S-XL
400	LATEX	BLUE/WHITE	KNIT WRIST	S-XL
LX15R	LATEX	RED/BLACK	KNIT WRIST	S-XL

COATED GLOVES



9-BL134

13 Gauge Hi Vis Blue Acrylic, Terrycloth Liner, Micro-Foam Palm.

ANSI: A4

Sizes: XS-2XL



9-ORL134

13 Gauge Hi Vis Orange Acrylic, Terrycloth Liner, Micro-Foam Palm.

ANSI: A4

Sizes: XS-2XL



ARCTIC-OR

10 Gauge Orange, Fleece Liner, Black Micro-Foam, Latex Palm.

Sizes: S-XL



9-NE407G

7 Gauge Hi Vis Green Acrylic Liner, Foam Latex Palm.

Sizes: S-2XL



DLX134

13 Gauge Hi Vis Green, Fully Coated Latex, Latex Micro-Foam Palm.

ANSI: A4

Sizes: S-2XL

STYLE NUMBER	PALM	COLOR	CUFF	SIZE
9-BL134	LATEX	BLUE/GREY	KNIT WRIST	XS-2XL
9-ORL134	LATEX	ORANGE/GREY	KNIT WRIST	XS-2XL
9-NE407G	LATEX	GREEN/BLACK	KNIT WRIST	S-2XL
ARCTIC-OR	LATEX	ORANGE/BLACK	KNIT WRIST	S-XL
DLX134	LATEX	GREEN/BLACK	KNIT WRIST	S-2XL

COATED GLOVES



HVNF338

15 Gauge Hi Vis Green
Nylon/Spandex Liner, Sandy
Nitrile Palm Coated.
Sizes: 6-11



NF300

13 Gauge Grey Nitrile Foam
Dipped Palm Coated, Nylon
Liner.
Sizes: 6-11



NMF5075

15 Gauge, Nylon Liner,
Black Nitrile Foam Palm
Sizes: 7-11



NF500BB

13 Gauge Black Nitrile Foam
Dipped Palm Coated, Nylon
Liner.
Sizes: 6-10



NMF506

15 Gauge Grey Nylon,
Black Nitrile Micro Foam
Palm Coated.
Sizes: 7-11



NMFD608

15 Gauge Grey Nylon,
Black Nitrile
Micro Foam Palm Coated
With Micro Dots.
Sizes: 7-11

STYLE NUMBER	PALM	COLOR	CUFF	SIZE
HVNF338	NITRILE	GREEN/BLACK	KNIT WRIST	6-11
NF300	NITRILE	GREY/WHITE	KNIT WRIST	6-11
NMF5075	NITRILE	BLACK/GREY	KNIT WRIST	7-10
NF500BB	NITRILE	BLACK	KNIT WRIST	6-10
NMF506	NITRILE	BLACK/GREY	KNIT WRIST	7-11
NMFD608	DOTTED NITRILE	BLACK/GREY	KNIT WRIST	7-11

COATED GLOVES

BPU4

Black PU Palm Coated,
Nylon, Knit Wrist.
Sizes: XS-XXL

GPU3

Grey PU Palm Coated,
Nylon, Knit Wrist.
Sizes: S-XXL

WPU4

White PU Palm Coated,
Nylon, Knit Wrist.
Sizes: S-XL



BP15PU

15 Gauge Black Nylon Liner and
Grey PU Coating.
Sizes: 7-11

NFG13

13 Gauge, Black Nitrile Palm
Coated,
Grey Nylon, Knit Wrist,
Sizes: S-2XL



STYLE NUMBER	PALM	COLOR	CUFF	SIZE
BPU4	POLYURETHANE	BLACK	KNIT WRIST	XS-XXL
GPU3	POLYURETHANE	GREY	KNIT WRIST	S-XXL
WPU4	POLYURETHANE	WHITE	KNIT WRIST	S-XL
BP15PU	POLYURETHANE	BLACK/GREY	KNIT WRIST	7-11
NFG13	NITRILE	GREY	KNIT WRIST	S-2XL

COMPLIANCE TESTING

UNDERSTANDING CUT SCORES

Seattle Glove uses both EN 388 and ANSI 105-2016 testing standards in regards to cut gloves. While compliance is not mandated in the United States, safety is our utmost priority and we want to make your safety choices easier!

Scale to Determine Cut Scores-ANSI

The ANSI standard now features nine cut levels significantly reducing the gaps between each level and better defining protection levels for the cut resistant gloves and sleeves with the highest gram scores.

The graph on the next page shows the differences between the levels. ANSI cut scores will feature an "A" in front of the score.

EN388 Methods and Scores

The EN 388, similar to ANSI/ISEA 105, is the European standard used to evaluate mechanical risks for hand protection. Gloves with a EN 388 rating are third party tested, and rated for abrasion, cut, tear, and puncture resistance.

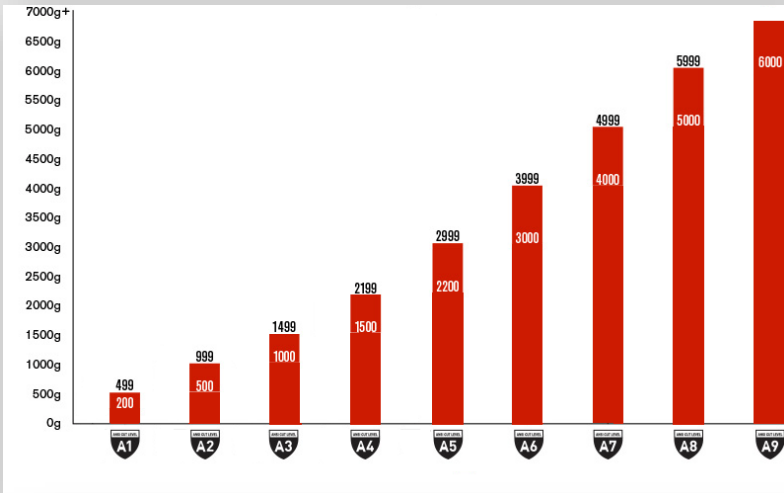
Cut resistance is rated 1-5, while all other physical performance factors are rated 1-4. The EN 388 2016 standard uses both the "Coup Test" and the "TDM-100 Test" to measure cut resistance for a more accurate score.

The Bottom Line

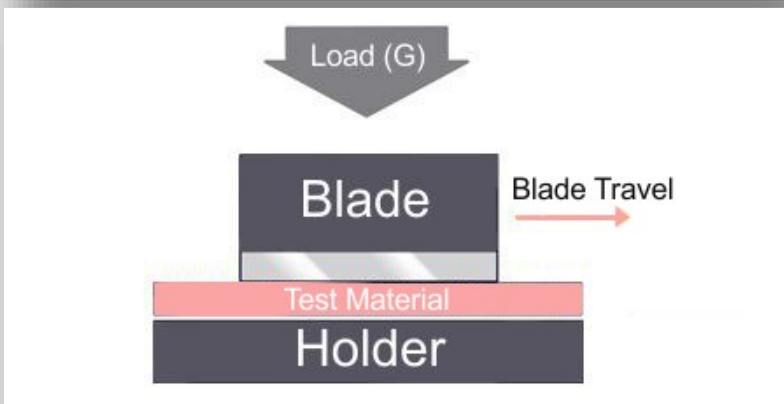
The most important takeaway is CE and ANSI/ISEA cut levels are not equal. As a result of the test method differences, ANSI/ISEA cut level 5 materials can have a higher cut resistance than CE cut level 5 materials. The scale is difficult to understand, but easier when you look at cut levels in grams. This is something to be aware of when purchasing PPE. Many companies advertise cut level 5, but do not specify whether that is CE or ANSI/ISEA.

ANSI VS EN388 STANDARDS

ANSI TEST METHOD/ RATING SCALE

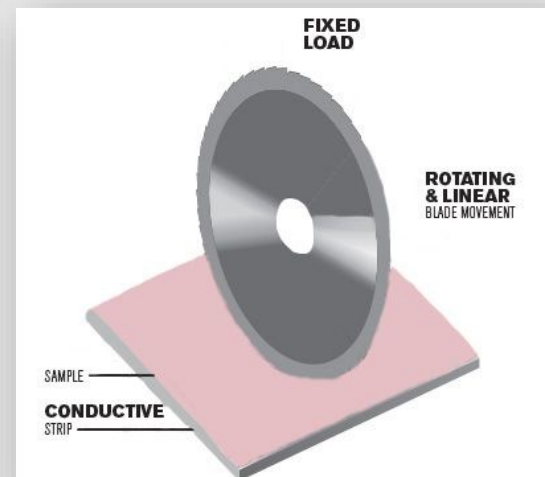
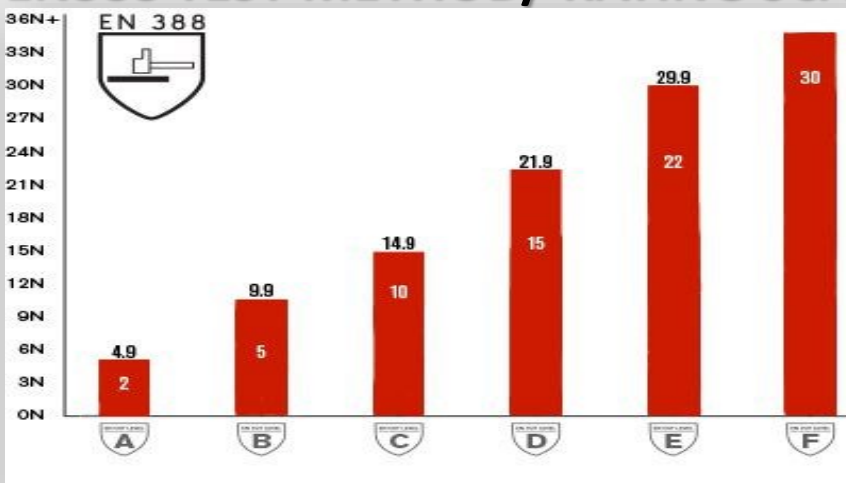


ANSI testing scores now range from A1-A9



The sample is cut by a straight-edge blade, under load, that moves along a straight path. The sample is cut five times each at three different loads with a new blade for each cut and the data is used to determine the required load to cut through the sample at a specified reference difference. This is referred to as the cutting force, which is then equated to a cut level.

EN388 TEST METHOD/ RATING SCALE



The Coup test determines a material's cut resistance rating through the counts of rotations needed for a circular blade, moving laterally, to cut through the material. The Coup test is not recommended for materials with high levels of cut resistance, because it can dull the blade, resulting in inaccurate testing. Instead, the ISO 13997 test can be used. This method is similar to the earlier referenced ASTM F1970 test that measures the amount of weight needed to cut through a material.

A COMPLETE LINE OF CUT RESISTANT

LIKE NEVER SEEN BEFORE

Coating grip is key in preventing razor sharp objects from slipping and making contact with hands or arms. Seattle Glove offers a range of different styles, coatings, materials and liners to meet the needs of the job. We are always looking to provide the latest cut resistant technology to our customers.



X5

GLOBE



MASTER

HV LB₃ N₃
contour grip



CUT RESISTANT



KC24

Regular Weight, 7 Gauge Kevlar®/Cotton Blend String Knit.

Sizes: S, L

K20

Regular Weight, 7 Gauge 100% Kevlar®.

Sizes: S-XL

K13

Light Weight, 13 Gauge, 100% Kevlar®.

Sizes: S, L

C6DD

13 Gauge Cut Resistant Glove, PVC Dots and Finger Tips, Ambidextrous.

ANSI: A6

Sizes: S-2XL



K20D

Regular Weight, 100% Kevlar®, One Side Dots.

Sizes: S, L

K20DD

Regular Weight 100% Kevlar®, Two Sided Dots.

Sizes: S-XL

KC24D

Regular Weight Kevlar®/Cotton Blend String Knit, One Side Dots.

Sizes: S, L

KC24DD

Regular Weight Kevlar®/Cotton Blend String Knit, Two Sided Dots.

Sizes: S, L

STYLE NUMBER	MATERIAL	COLOR	CUFF	SIZE
KC24	KEVLAR	YELLOW	KNIT WRIST	S,L
K20	KEVLAR	YELLOW	KNIT WRIST	S-XL
K13	KEVLAR	YELLOW	KNIT WRIST	S,L
C6DD	HPPE/PVC	BLACK/GREY	KNIT WRIST	S-XXL
K20D	PVC	YELLOW	KNIT WRIST	S,L
K20DD	PVC	YELLOW	KNIT WRIST	S-XL
KC24D	PVC	YELLOW	KNIT WRIST	S,L
KC24DD	PVC	YELLOW	KNIT WRIST	S,L

CUT RESISTANT



SPARTACUS

HPPE, Cut Resistant Glove,
PU Coated Palm.

ANSI: A4

Sizes: S-2XL



LB3

HPPE, Cut Resistant Glove,
Latex Crinkle Palm.

ANSI: A4

Sizes: XS-2XL



HVNF133

Hi-Vis Green, Nylon/Latex Cut
Resistant Glove, Nitrile Palm.

ANSI: A3

Sizes: 6-11



HV

HPPE, Hi-Vis Green,
Nitrile Foam Coated Palm.

ANSI: A4

Sizes: S-3XL



ARC134

Nitrile Coated Palm and Liner
with Flame, Heat and Arc
Flash Resistance.

ANSI: A4

Sizes: S-2XL



N3

HPPE, Cut Resistant Glove,
Nitrile Coated Palm.

ANSI: A4

Sizes: S-2XL

STYLE NUMBER	MATERIAL	PALM	CUT RATING	CUFF	SIZE
SPARTACUS	HPPE	POLYURETHANE	EN388: 4543 ANSI: A4	KNIT WRIST	S-2XL
LB3	HPPE	LATEX	EN388: 4543 ANSI: A4	KNIT WRIST	XS-2XL
HVNF133	NYLON/LATEX	NITRILE	ANSI: A3	KNIT WRIST	6-11
HV	HPPE	NITRILE	EN388: 4544 ANSI: A4	KNIT WRIST	S-3XL
ARC134	MIX	NITRILE	ANSI: A4	KNIT WRIST	S-2XL
N3	HPPE	NITRILE	EN388: 4543 ANSI: A4	KNIT WRIST	S-2XL

CUT RESISTANT



SBN718

Cut Resistant Knit, Black Sandy Foam Nitrile Palm, 18 Gauge.

ANSI: A8

Sizes: S-2XL



NMFD1864

HPPE, Nitrile palm, 18 Gauge.

ANSI: A6

Sizes: XS-2XL



ATV102

Polyester String Knit, Rubber Latex Anti-Vibration Padded Palm, 10 Gauge.

ANSI: A2

Sizes: 7-11



CRBN3

HPPE, Cut Resistant Glove, Nitrile Foam Coating.

ANSI: A4

Sizes: S-5XL



SBNCR913

HPPE, Cut Resistant Knit, Black Nitrile, 13 Gauge.

ANSI: A9

Sizes: S-2XL



GBNC5

TAEKI Cut Resistant Knit, Black Nitrile, 13 Gauge.

ANSI: A5

Sizes: 6-12

STYLE NUMBER	MATERIAL	PALM	CUT RATING	CUFF	SIZE
SBN718	HPPE	NITRILE	EN338:4X43F ANSI: A8	KNIT WRIST	S-2XL
CRBN3	HPPE	NITRILE	EN388: 4543 ANSI: A4	KNIT WRIST	S-5XL
GBNC5	TAEKI YARN	NITRILE	EN388: 4543 ANSI: A5	KNIT WRIST	6-12
NMFD1864	HPPE	NITRILE	ANSI: A6	KNIT WRIST	XS-2XL
ATV102	LATEX	NITRILE	ANSI: A2	KNIT WRIST	7-11
SBNCR913	HPPE	NITRILE	ANSI: A9	KNIT WRIST	S-2XL

CUT RESISTANT



SBNCR6
Cut Resistant, Nitrile Palm,
13 Gauge.
ANSI: A6
Sizes: S-2XL



GDYP4
Cut Resistant Knit, Grey PU
Palm Coated, 13 Gauge.
ANSI: A3
Sizes: S-3XL



GMB-T15454
Black PU Palm, 15 Gauge.
ANSI: A5
Sizes: S-2XL



GM-T15454N
Black Nitrile Palm, 15 Gauge.
ANSI: A5
Sizes: S-2XL



PU372
HPPE Soft Fiber, PU Palm,
13 Gauge.
ANSI: A2
Sizes: S-2XL

STYLE NUMBER	MATERIAL	PALM	CUT RATING	CUFF	SIZE
GDYP4	HPPE	POLYURETHANE	EN388: 4344 ANSI: A3	KNIT WRIST	S-3XL
GMB-T15454	HPPE	POLYURETHANE	EN338: 4X42E ANSI: A5	KNIT WRIST	S-2XL
PU372	HPPE	POLYURETHANE	EN388: 4342 ANSI: A2	KNIT WRIST	S-2XL
GM-T15454N	HPPE	NITRILE	ANSI: A5	KNIT WRIST	S-2XL
SBNCR6	HPPE	NITRILE	EN338: 4X42F ANSI: A6	KNIT WRIST	S-2XL

CUT RESISTANT



SPARTTC

Cut Resistant Knit, Grey PU Palm, Leather Thumb Protection, 13 Gauge.

ANSI: A4

Sizes: S-XL



SPG-T133

Cut Resistant Knit, Grey PU Palm, 13 Gauge.

ANSI: A3

Sizes: S-2XL



TK5LP

Kevlar® Sewn, Leather Palm, Terry Loop for Heat Resistance.

ANSI: A5

Sizes: S-XXL



WDP3

White Cut Resistant Knit, PU Palm, 13 Gauge.

ANSI: A3

Sizes: S-XXL



X5

HPPE, Cut Resistant Knit, PU Palm, 13 Gauge.

ANSI: A6

Sizes: S-3XL

STYLE NUMBER	MATERIAL	PALM	CUT RATING	CUFF	SIZE
SPARTTC	HPPE	POLYURETHANE	EN338: 4543 ANSI: A4	KNIT WRIST	S-XL
SPG-T133	HPPE	POLYURETHANE	EN338: 4X43C ANSI: A3	KNIT WRIST	S-2XL
TK5LP	STAINLESS STEEL	POLYURETHANE	EN338:4541 ANSI: A5	KNIT WRIST	S-XXL
WDP3	HPPE	POLYURETHANE	EN388: 4344 ANIS: A3	KNIT WRIST	S-XXL
X5	HPPE	POLYURETHANE	EN388: 4544 ANSI: A6	KNIT WRIST	S-3XL

CUT RESISTANT



KS10

10" Kevlar® Sleeve, 2 Ply.

KS14

14" Kevlar® Sleeve, 2 Ply.

KS14T-Thumb Hole

KS18

18" Kevlar® Sleeve, 2 Ply.

KS18T-Thumb Hole

KEV24T

24" Kevlar® Sleeve, 2 Ply, Thumb Hole.



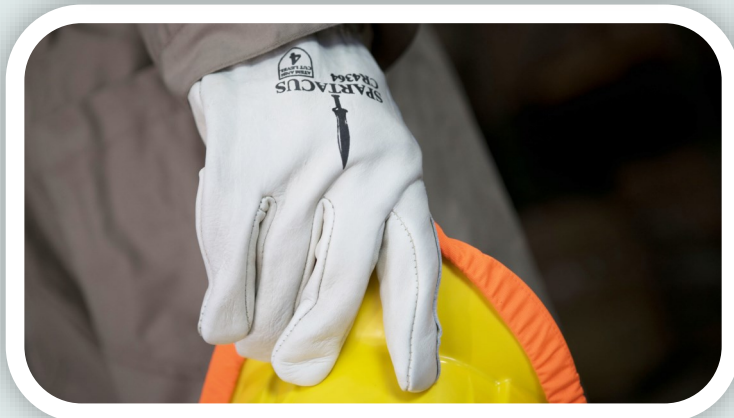
AB22T-XL

Abratex Sleeve, Cut Resistant, 22",
Thumb Hole.

STYLE NUMBER	MATERIAL	COLOR	CUFF	SIZE
KS10	KEVLAR	YELLOW	10"	ONE SIZE
KS14	KEVLAR	YELLOW	14"	ONE SIZE
KS14T	KEVLAR	YELLOW	14"	ONE SIZE
KS18	KEVLAR	YELLOW	18"	ONE SIZE
KS18T	KEVLAR	YELLOW	18"	ONE SIZE
KEV24T	KEVLAR	YELLOW	24"	ONE SIZE
AB22T-XL	ABRATEx	WHITE	22"	XL

CUT RESISTANT LEATHER

Cut resistant leather gloves provide the comfort of a drivers glove, with extra protection for the job at hand.



CUT RESISTANT LEATHER



CR4335
Grain Driver, Wing Thumb,
Kevlar Thread.
ANSI: A4
Sizes: S-XXL



CR4364
Grain Driver, Keystone
Thumb, Kevlar thread.
ANSI: A4
Sizes: S-XXL



CR1458K
Premium Side Split Leather
Kevlar® Sewn, Heat
Resistant, Extended 5" Cuff
ANSI: A9
Sizes: L, XL



CR8465
Goatskin Grain Driver, HPPE
lining, Wing Thumb.
ANSI: A5
Sizes: S-3XL



CR8465HV
A/B grade Goatskin, Wing Thumb,
"WATCH YOUR HANDS" Logo.
ANSI: A5
Sizes: S-3XL

STYLE NUMBER	MATERIAL	THUMB	CUT RATING	CUFF	SIZE
CR4335	COWHIDE	WING	ANSI: A4	OPEN	S-XXL
CR4364	COWHIDE	KEYSTONE	ANSI: A4	OPEN	S-XXL
CR8465	GOATSKIN	WING	EN388: 2342E ANSI: A5	OPEN	S-3XL
CR8465HV	GOATSKIN	WING	ANSI: A5	OPEN	S-3XL
CR1458K	HPPE	WING	ANSI: A9	SAFETY	L-XL

SUPPORTED NITRILE



V9875KW

Heavy Weight Blue Nitrile Coated Palm, Jersey Lined, Knit Wrist, Men's.

V9875KWS-Ladies

V9875BT

Heavy Weight Blue Nitrile Coated Palm, Jersey Lined, 2.5" Safety Cuff, Men's.

V9830

Light Weight Blue Nitrile Coated Palm, Interlock Lined, Knit Wrist, Men's.

V9830W-Ladies



V9850

Brown Nitrile, Drivers Style, Canvas Back. Sizes: S-L



V9870BT

Heavy Weight Blue Nitrile Fully Coated, Jersey Lined, 2.5" Safety Cuff, Men's.

V9870BT-XL

V9870RBT

Heavy Weight Blue Nitrile, Rough Finish, Jersey Lined, 2.5" Safety Cuff, Men's.

V9870KW

Heavy Weight Blue Nitrile, Rough Finish, Jersey Lined, Knit Wrist, Men's.

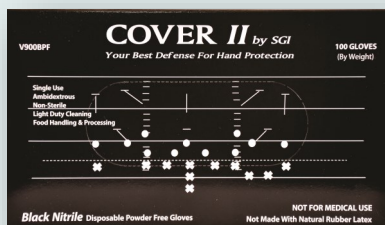


V9860P

Blue Nitrile Cut & Sewn, Perforated Back. Sizes: M-L

V9860PW-Ladies Sizes: M-L

STYLE NUMBER	MATERIAL	COLOR	CUFF	SIZE
V9875KW	NITRILE	BLUE	KNIT WRIST	MEN'S, LADIES
V9875BT	NITRILE	BLUE	BAND TOP	MEN'S
V9830	NITRILE	BLUE	KNIT WRIST	MEN'S, LADIES
V9870BT	NITRILE	BLUE	BAND TOP	MEN'S, XL
V9870RBT	NITRILE	BLUE	BAND TOP	MEN'S
V9870KW	NITRILE	BLUE	KNIT WRIST	MEN'S
V9850	NITRILE	ORANGE	SLIP ON	S-L
V9860P	NITRILE	BLUE	SLIP ON	M-L, LADIES



DISPOSABLE



V700PF

4 Mil Latex, Industrial Grade,
Powder Free.

Sizes: S-XL

V715PF

15 Mil Heavy Duty Latex, Powder
Free.

Sizes: S-XL



V908ONPF

8 Mil Nitrile,
Industrial Grade,
Powder Free,
Diamond Texture.

Sizes: S-2XL



V900PF

4 Mil Blue Nitrile, Industrial Grade
Powder Free.

Sizes: S-2XL

V908MPF

8 Mil Nitrile, Medical Grade, Powder Free.

Sizes: S-XL

V900BPF

5 Mil Black Nitrile, Powder Free.

Sizes: S-2XL



V900MPF

3.5 Mil Nitrile, Medical Grade,
Powder Free.

Sizes: S-XL

V905MPF

5.5 Mil Nitrile, Medical Grade,
Powder Free.

Sizes: S-2XL

V800PF

Vinyl, Industrial Grade,
Powder Free.

Sizes: S-XL

STYLE NUMBER	MATERIAL	COLOR	MIL	POWDER	SIZE
V700PF	LATEX	NATURAL	4	POWDER FREE	S-XL
V715PF	LATEX	BLUE	15	POWDER FREE	S-XL
V800PF	VINYL	NATURAL	5	POWDER FREE	S-XL
V900PF	NITRILE	BLUE	4	POWDER FREE	S-XXL
V908MPF	NITRILE	BLUE	8	POWDER FREE	S-XL
V900BPF	NITRILE	BLACK	5	POWDER FREE	S-XXL
V900MPF	NITRILE	BLUE	3.5	POWDER FREE	S-XL
V905MPF	NITRILE	BLACK	5.5	POWDER FREE	S-XXL
V908ONPF	NITRILE	ORANGE	8	POWDER FREE	S-XXL



D8630-10

Black PVC, Rough Finish, Interlock Lined,
10" Gauntlet.

D8610-Knit Wrist

D8630-12 12" Gauntlet

D8630-14 14" Gauntlet

D8630-14RHO 14" Gauntlet, Right Hand Only

D8630-14LHO 14" Gauntlet, Left Hand Only

D8630-18 18" Gauntlet

D8610J

PVC, Rough, Jersey Lining, Knit Wrist.

D8630J-12 12" Gauntlet

D8630J-14 14" Gauntlet



D8810

Black PVC, Smooth Finish, Interlock
Lined, Knit Wrist.

D8830-10 10" Gauntlet

D8830-12 12" Gauntlet

D8830-14 14" Gauntlet

D8830-18 18" Gauntlet

STYLE NUMBER	MATERIAL	COLOR	CUFF	SIZE
D8630-10	PVC	BLACK	10" GAUNTLET	ONE SIZE
D8610	PVC	BLACK	KNIT WRIST	ONE SIZE
D8630-12	PVC	BLACK	12" GAUNTLET	ONE SIZE
D8630-14 (RHO/LHO)	PVC	BLACK	14" GAUNTLET	ONE SIZE
D8630-18	PVC	BLACK	18" GAUNTLET	ONE SIZE
D8610J	PVC	BLACK	KNIT WRIST	ONE SIZE
D8630J-12	PVC	BLACK	12" GAUNTLET	ONE SIZE
D8630J-14	PVC	BLACK	14" GAUNTLET	ONE SIZE
D8810	PVC	BLACK	KNIT WRIST	ONE SIZE
D8830-10	PVC	BLACK	10" GAUNTLET	ONE SIZE
D8830-12	PVC	BLACK	12" GAUNTLET	ONE SIZE
D8830-14	PVC	BLACK	14" GAUNTLET	ONE SIZE
D8830-18	PVC	BLACK	18" GAUNTLET	ONE SIZE

PVC



DG8430J-12

Green PVC, Sandy Finish, Jersey Lined, 12" Gauntlet.

DG8430J-14 14" Gauntlet



D8630XR-12

Black PVC, Extra Rough Finish, Interlock Lined, 12" Gauntlet.



D8430-12

Black PVC, Sandy Finish, Interlock Lined, 12" Gauntlet.

D8410-Knit Wrist

D8430-10 10" Gauntlet

D8430-12 12" Gauntlet

D8430-14 14" Gauntlet

D8410J

Black PVC, Sandy Finish, Jersey Lined, Knit Wrist.

D8430J-12 12" Gauntlet

D8430J-14 14" Gauntlet

STYLE NUMBER	MATERIAL	COLOR	CUFF	SIZE
DG8430J-12	PVC	GREEN	12" GAUNTLET	ONE SIZE
DG8430J-14	PVC	GREEN	14" GAUNTLET	ONE SIZE
D8630XR-12	PVC	BLACK	12" GAUNTLET	ONE SIZE
D8430-12	PVC	BLACK	12" GAUNTLET	ONE SIZE
D8410	PVC	BLACK	KNIT WRIST	ONE SIZE
D8430-10	PVC	BLACK	10" GAUNTLET	ONE SIZE
D8430-12	PVC	BLACK	12" GAUNTLET	ONE SIZE
D8430-14	PVC	BLACK	14" GAUNTLET	ONE SIZE
D8410J	PVC	BLACK	KNIT WRIST	ONE SIZE
D8430J-12	PVC	BLACK	12" GAUNTLET	ONE SIZE
D8430J-14	PVC	BLACK	14" GAUNTLET	ONE SIZE

PVC



8940
Fluorescent Orange
PVC, Knit Wrist.



8940BT
Fluorescent Orange PVC,
Band Top.



8940R-12
Fluorescent Orange PVC,
Foam Lined, Rough Finish, 12"
Gauntlet.



DB84-12
Blue PVC, Sandy Finish, Cotton Knit
Liner, 12" Gauntlet.
Size: L-2XL



DY14
Yellow Fully Coated PVC, 14" Gauntlet.

STYLE NUMBER	MATERIAL	COLOR	CUFF	SIZE
8940	PVC	ORANGE	KNIT WRIST	ONE SIZE
8940BT	PVC	ORANGE	BAND TOP	ONE SIZE
8940R-12	PVC	ORANGE	12" GAUNTLET	ONE SIZE
DB84-12	PVC	BLUE	12" GAUNTLET	L-2XL
DY14	PVC	YELLOW	14" GAUNTLET	ONE SIZE

UNSUPPORTED NITRILE



GNF812

Green Nitrile, Sandy Finish,
Interlock Lining, 12" Gauntlet.
Size: L-2XL



LY17

17 Mil Yellow Latex, Flock Lined, Pinked Cuff.
Sizes: S-XL



LN28

28 Mil Neoprene on Latex, Flock Lined.
Sizes: 8-12



NF15

15 Mil Green Nitrile,
Flock Lined.
Sizes: 8-12

NU11

11 Mil Green Nitrile,
Unlined.
Sizes: 8-12

NU15

15 Mil Green Nitrile,
Unlined.
Sizes: 8-12

NU22

22 Mil Green Nitrile,
Unlined.
Sizes: 8-11

STYLE NUMBER	MATERIAL	COLOR	MIL	CUFF	SIZE
GNF812	NITRILE	GREEN	N/A	GAUNTLET	L-2XL
LY17	LATEX	YELLOW	17	OPEN	S-XL
LN28	NEOPRENE/LATEX	BLUE/ YELLOW	28	OPEN	8-12
NF15	NITRILE	GREEN	15	OPEN	8-12
NU11	NITRILE	GREEN	11	OPEN	8-12
NU15	NITRILE	GREEN	15	OPEN	8-12
NU22	NITRILE	GREEN	22	OPEN	8-11

A PROVIDER OF INNOVATIVE SAFETY PRODUCTS

Seattle Glove started as a supplier of gloves and we have expanded to apparel, safety glasses, boots and more! We continue to grow with a vast array of consumable personal protective wear to meet your needs!



RAINWEAR



3001

3 Piece Yellow Rain Suit, .35mm PVC/Polyester, Jacket, Detachable Hood and Bib, Overall Pants, Corduroy Collar, Storm Fly Front Snaps. Sizes: S-6XL

3001FR

3 Piece Yellow Rain Suit, .35mm PVC/Polyester, Jacket, Detachable Hood and Bib Overall Pants, Fire Resistant. Sizes: S-6XL



3060BFRR

60" Black Raincoat, .35mm PVC/Polyester, Fire Resistant, Waterproof, Snap Front, Detachable Hood, Cape Vented Back. Sizes: S-3XL

3060



3048



3048

48" Yellow Raincoat, .35mm PVC/Polyester, Detachable Hood, Storm Fly, Front Snaps. Sizes: S-5XL

3060B

Black Rider Rain Coat, .35mm PVC/Polyester, 60" Long. Sizes: S-6XL

STYLE NUMBER	MATERIAL	COLOR	MIL	SIZE
3001	PVC/POLYESTER	YELLOW	.35	S-6XL
3001FR	PVC/POLYESTER	YELLOW	.35	S-6XL
3048	PVC/POLYESTER	YELLOW	.35	S-5XL
3060B	PVC/POLYESTER	BLACK	.35	S-6XL
3060BFRR	COTTON	BLACK	.35	S-3XL

BOOTS



BHW31ST
Black Hip Wader With Steel Toe.
Sizes: 7-15



B16
16" Black PVC, Unlined, Plain Toe.
Sizes: 5-14
B16ST
16" Black PVC, Unlined, Steel Toe.
Sizes: 5-14

STYLE NUMBER	MATERIAL	COLOR	STEEL TOE	SIZE
B16	PVC	BLACK	NO	5-14
B16ST	PVC	BLACK	YES	5-14
BHW31ST	PVC	BLACK	YES	7-15

WELDING APPAREL



71-30
30" Welding Jacket.
Sizes: M-XXL



72
Leather Cape Sleeve.
Sizes: M-XXL

73-14
14" Leather Bib.

73-20
20" Leather Bib.



FR-SLEEVE-23
Green 9 Oz. FR Sleeve, 23" Long.

STYLE NUMBER	MATERIAL	COLOR	SIZE
71-30	LEATHER	RUSSET	M-XXL
72	LEATHER	RUSSET	M-XXL
73-14	LEATHER	RUSSET	ONE SIZE
73-20	LEATHER	RUSSET	ONE SIZE
FR-SLEEVE-23	COTTON	GREEN	ONE SIZE

SAFETY VESTS



SVO

Universal Orange Vest.



SVG

Universal Green Vest.



SVRB

Universal Royal Blue Vest.



SV300NP

Yellow Mesh, Class 3,
Reflective Tape, Sleeves, No
Pockets.

Sizes: M-6XL



SV-GL260

Lime Green, Class 2, Long
Sleeves, Broken Reflective,
Front Pocket.

Sizes: S-5XL



SV-GS250

Lime Green, Class 2, Short
Sleeves, Broken Reflective,
Front Pocket.

Sizes: S-5XL

STYLE NUMBER	MATERIAL	COLOR	CLASS	POCKETS	SIZE
SVO	POLYESTER	ORANGE	0	0	ONE SIZE
SVG	POLYESTER	YELLOW	0	0	ONE SIZE
SVRB	POLYESTER	BLUE	0	0	ONE SIZE
SV300NP	POLYESTER	YELLOW	3	0	M-6XL
SV-GL260	POLYESTER	YELLOW	2	1	S-5XL
SV-GS250	POLYESTER	YELLOW	2	1	S-5XL

SAFETY VESTS



SV230YOP

Lime Green, Class 2, Solid 100% Polyester Front, Mesh Back, 6 Pockets, DOT Stripes.
Sizes: S-5XL



SV240OOP

Orange, Class 2, Solid 100% Polyester Front, Mesh Back, 6 Pockets, DOT Stripes.
Sizes: S-6XL



SV5TA

Lime, Class 2, 5 Point Break Away, Reflective Tape.
Sizes: M- 4XL



SVOR292

Orange, Break Away, Class 2, Reflective Tape, Front Clear Pocket.
Sizes: M- 4XL

STYLE NUMBER	MATERIAL	COLOR	CLASS	POCKETS	SIZE
SV230YOP	POLYESTER	YELLOW	2	6	S-5XL
SV240OOP	POLYESTER	ORANGE	2	6	S-6XL
SV5TA	POLYESTER	YELLOW	2	2	M-4XL
SVOR292	POLYESTER	ORANGE	2	4	M-4XL

SAFETY VESTS



SVOR20IP

Orange Mesh, Class 2, Reflective Tape, Inside Pocket, Yellow Trim, Zipper. Sizes: M-5XL



SV210IP

Yellow Mesh, Class 2, Reflective Tape, Inside Pocket, Orange Trim, Zipper Closure. Sizes: M-5XL



SV02

Surveyor's Safety Vest, Yellow, Class 2, Silver on Orange Backing, Solid Front, Mesh Back, 4 Pockets, Zipper Closure. Sizes: M-4XL



SV220OP

Yellow Mesh, Class 2, Reflective Tape, Outside Pockets, Zipper Closure. Sizes: S-5XL

STYLE NUMBER	MATERIAL	COLOR	CLASS	POCKETS	SIZE
SVOR20IP	POLYESTER	ORANGE	2	1	M-5XL
SV210IP	POLYESTER	YELLOW	2	1	M-5XL
SV02	POLYESTER	YELLOW	2	4	S-4XL
SV220OP	POLYESTER	YELLOW	2	3	S-5XL

SAFETY VESTS



SV88SE

Yellow Mesh, Class 2, FR Treated Safety Vest with Three Outside Pockets, Zipper Closure. Self-Extinguishing
Size: S-7XL



SV5PBAW

Yellow Mesh, Class 2, Two Inside Pockets, Velcro Closure.
Size: M-4XL



SV-C2LBBF

Class 2, Yellow Mesh Front and Back, Black Bottom, Outside Pocket.
Size: S-5XL



SV21FR-LZ

Yellow Mesh, Class 2, Modacrylic, 3 Outside Pockets.
NFPA 2112
Size: S-7XL

STYLE NUMBER	MATERIAL	COLOR	CLASS	POCKETS	SIZE
SV88SE	POLYESTER	YELLOW	2	3	S-7XL
SV-C2LBBF	POLYESTER	YELLOW/ BLACK	2	1	S-5XL
SV5PBAW	POLYESTER	YELLOW	2	2	M-4XL
SV21FR-LZ	POLYESTER	YELLOW	2	3	S-7XL

SAFETY VESTS



SVOR5TA

Orange, Class 2,
5 Point Break Away,
Reflective Tape.
Sizes: M-4XL



SV3201OR

Yellow, Class 2, Zipper Front,
Two pockets—1 inside, 1 outside
Sizes: M-5XL



SV017

Surveyor's Vest, Yellow, Class 2,
Solid Polyester Front and Back, 4
Pockets, Zipper Closure.
Sizes: M-5XL



SV3201G

Yellow, Class 2, Zipper Front,
Two pockets—1 inside, 1 outside
Sizes: M-5XL

STYLE NUMBER	MATERIAL	COLOR	CLASS	POCKETS	SIZE
SV017	POLYESTER	YELLOW	2	4	M-5XL
SV5TA	POLYESTER	YELLOW	2	1	M-4XL
SV3201G	POLYESTER	YELLOW	2	2	M-5XL
SV3201OR	POLYESTER	ORANGE	2	2	M-5XL

FR COVERALL



FR-GRYC7

7 Oz 100% Cotton
Grey FR Coverall.
Standard: Meets NFPA 2112
ATPV: 8.6cal/cm² HRC: 2
Sizes: XS-7XL,
Tall XS -Tall 7XL

FR-NBC7

7 Oz 100% Cotton
Navy Blue FR Coverall.
Standard: Meets NFPA 2112
ATPV: 8.6cal/cm² HRC: 2
Sizes: XS-7XL,
Tall XS -Tall 7XL

FR-TANC7

7 Oz 100% Cotton
Tan FR Coverall.
Standard: Meets NFPA 2112
ATPV: 8.6cal/cm² HRC: 2
Sizes: XS-7XL,
Tall XS -Tall 7XL

STYLE NUMBER	MATERIAL	COLOR	POCKETS	SIZE
FR-GRYC7	COTTON	GREY	6	XS-7XL
FR-NBC7	COTTON	BLUE	6	XS-7XL
FR-TANC7	COTTON	TAN	6	XS-9XL

NORTHERN EXPOSURE



NE-81HGJ

Hi Vis Green, 8-IN-1 ,Waterproof Bomber Jacket.
Sizes: M-5XL



NE-01HGJ

Bomber Jacket, Grey Lining, Radio Straps And Pocket.
Sizes: M-5XL



NE-11HGB

Hi Vis Green Waterproof Bib Overall.
Sizes: M-5XL



NE-21RHIME

Bomber Jacket, 2-IN-1, Radio Pocket, Removable Fleece Liner.
Available in Orange (**NE-21ORANGE**)
Sizes: M-5XL

STYLE NUMBER	MATERIAL	COLOR	SIZE
NE-81HGJ	POLYESTER	YELLOW/BLACK	M-5XL
NE-01HGJ	POLYESTER	YELLOW/BLACK	M-5XL
NE-11HGB	POLYESTER	YELLOW/BLACK	M-5XL
NE-21RHIME	POLYESTER	YELLOW/BLACK	M-5XL
NE-21ORANGE	POLYESTER	ORANGE/BLACK	M-5XL

DISPOSABLE COVERALLS



MIC412C

Microporous
Coverall, Zipper
Front.
Sizes: M-7XL

MIC414C

Microporous
Coverall, Attached
Hood and Boots,
Elastic Wrists.
Sizes: M-6XL

MIC417C

Microporous
Coverall, Elastic
Wrists and
Ankles.
Sizes: S-5XL

MIC428C

Microporous
Coverall, Attached
Hood, Elastic
Wrists and Ankles.
Sizes: M-6XL

SMS8417B

Blue SMS
Coverall,
Elastic Wrists
and Ankles.
Sizes: S-5XL

STYLE NUMBER	MATERIAL	COLOR	HOOD	BOOTS	SIZE
MIC412C	MICROPOROUS	WHITE	NO	NO	M-7XL
MIC414C	MICROPOROUS	WHITE	YES	YES	M-6XL
MIC417C	MICROPOROUS	WHITE	NO	NO	S-5XL
MIC428C	MICROPOROUS	WHITE	YES	NO	M-6XL
SMS8417B	SMS	BLUE	NO	NO	S-5XL

DISPOSABLE COVERALLS



E8414C



E8417C



E8428C



PP25CB



PP50CB

E8414C

SMS Coverall, Attached Hood and Boots.

Sizes: M-4XL

E8417C

SMS Coverall, Elastic Wrists and Ankles.

Sizes: M-4XL

E8428C

SMS Coverall, Attached Hood, Elastic Wrists and Ankles

Sizes: M-4XL

PP25CB

Light Weight, White Polypropylene Coverall, Elastic Wrists, Zipper, Attached Hood and Boots.

Sizes: L-4XL

PP50CB

Heavy Weight, White Polypropylene Coverall, Elastic Wrists, Zipper, Hood and Boots.

Sizes: L-5XL

STYLE NUMBER	MATERIAL	COLOR	HOOD	BOOTS	SIZE
E8414C	SMS	WHITE	YES	YES	M-4XL
E8417C	SMS	WHITE	NO	NO	M-4XL
E8428C	SMS	WHITE	YES	NO	M-4XL
PP25CB	POLYPROPYLENE	WHITE	YES	YES	L-5XL
PP50CB	POLYPROPYLENE	WHITE	YES	YES	L-5XL

SAFETY GLASSES



RE09-C

Clear Polycarbonate with Anti-Scratch Lens.

RE09-AF

Clear Polycarbonate with Anti-Scratch and Anti-Fog Lens.



RE09-IO

Clear Polycarbonate with Anti-Scratch Lens, Indoor/Outdoor.



RE09-SMK

Black Smoke Polycarbonate with Anti-Scratch Lens.



RE09-AMR

Yellow Amber Polycarbonate with Anti-Scratch Lens.

STYLE NUMBER	MATERIAL	COLOR	ANTI-SCRATCH	ANTI-FOG	LENS TYPE
RE09-C	POLYCARBONATE	CLEAR	YES	NO	CLEAR
RE09-AF	POLYCARBONATE	CLEAR	YES	YES	CLEAR
RE09-IO	POLYCARBONATE	CLEAR	YES	NO	INDOOR/ OUTDOOR
RE09-SMK	POLYCARBONATE	BLACK	YES	NO	BLACK
RE09-AMR	POLYCARBONATE	YELLOW	YES	NO	YELLOW

SAFETY GLASSES



RE50-SS-C

Black Smoke Polycarbonate with Anti-Scratch Lens and Rubber Temples.



RE50-SS-BMS

Blue Mirror with Anti-Scratch Lens and Rubber Temples.



RE50-GMP

Gold Mirror with Anti-Scratch Lens and Rubber Temples.



RE50-SMK

Black Smoke with Anti-Scratch Lens and Rubber Temples.

STYLE NUMBER	MATERIAL	COLOR	ANTI-SCRATCH	ANTI-FOG	LENS TYPE
RE50-SS	POLYCARBONATE	RED	YES	NO	BLACK
RE50-BMS	POLYCARBONATE	RED	YES	NO	BLUE MIRROR
RE50-GMP	POLYCARBONATE	RED	YES	NO	GOLD MIRROR
RE50-SMK	POLYCARBONATE	BLACK	YES	NO	BLACK

SAFETY GLASSES



RE50-AF

Clear Polycarbonate with Anti-Scratch Lens, Rubber Temples and Nose Piece and Anti-Fog.



RE50-IO

Clear Polycarbonate with Anti-Scratch Lens, Rubber Temples and Nose Piece, Indoor/ Outdoor.



RE50-AMR

Amber Polycarbonate Lens with Anti-Scratch Lens, Rubber Temples and Nose Piece.



RE50-C

Clear Polycarbonate with Anti-Scratch Lens, Rubber Temples and Nose Piece.

STYLE NUMBER	MATERIAL	COLOR	ANTI-SCRATCH	ANTI-FOG	LENS TYPE
RE50-AF	POLYCARBONATE	BLACK	YES	YES	CLEAR
RE50-IO	POLYCARBONATE	BLACK	YES	NO	INDOOR/ OUTDOOR
RE50-AMR	POLYCARBONATE	BLACK	YES	NO	AMBER
RE50-C	POLYCARBONATE	BLACK	YES	NO	CLEAR

ACCESSORIES



CAUTION-2

Yellow Caution Tape, 2 Mil, 3" x 1000'.

CAUTION-3 3MIL

DANGER-2

Red Danger Tape, 2 Mil, 3" x 1000'.

DANGER-3 3 MIL



YGC

Yellow dual clip

Durable

Temperature resistant

Non-conductive



SVNS350

Yellow Neck Shade

With Orange Trim.



LA02

Black Safety Glasses
Lanyard with Adjustable
Cinch.



SHCVRPP6

Blue Polypropylene Shoe
Covers with Non-Skid
Tread and Elastic
Closure.

Sizes: L-2XL



SLVPP18

18" Polypropylene sleeve with
Elastic Closure.

«DUPONT»

Tyvek®



«DUPONT»

Tyvek.

«DUPONT»

Tychem.

«DUPONT»

ProShield.

CHOOSING A GARMENT

Fabric technologies typically used in DuPont protective garments

All images are magnified.

Before searching for a general chemical protective garment, a detailed assessment of the nature of the hazard and the working environment is needed. There are different factors such as chemical concentration, temperature, pressure and the work environment that should be matched to the garment's fabric, design and seam construction.

DuPont Protective Garment Fabric Technologies

DuPont™ Tychem®

Chemical barrier fabrics specifically engineered for protection over a range of hazards.

DuPont™ Tyvek®

Made only by DuPont, it offers superior protection and durability. Tyvek® is 100% high-density polyethylene fibers entangled into a protective material with no fillers or thin films to wear away.

Microporous (MPF) Films

Bi-laminate with a thin microporous film layer on a spunbonded polypropylene nonwoven, these fabrics offer limited durability. Barrier protection is lost when the film layer is abraded.

Spunbonded-Meltblown-Spunbonded (SMS)

SMS fabrics rely on the melt blown polypropylene layer in the middle of the open tri-laminate polypropylene structure to act as the main filter for particles.

Seam Construction



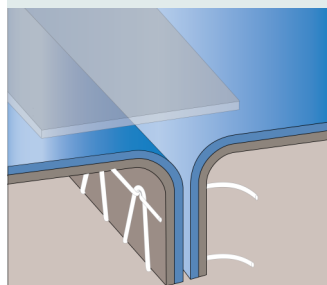
Serged or Sewn*

A seam produced when three threads are interlocked around the raw edges of two pieces of material for a strong, stress-resistant seam.



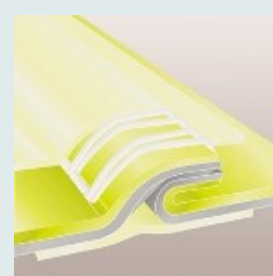
Bound*

Tightly sewn with a reinforced outer binding to increase seam strength and barrier. For potential misting exposure of non-hazardous liquids or particle penetration through the seam.



Taped

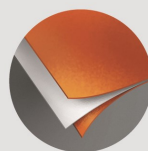
Both sewn and taped to provide strong chemical resistance against heavy liquid splashes and tough seam stress. A sewn seam is covered with a strip of compatible material by heat sealing.



Double Taped

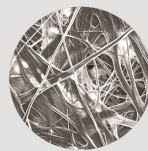
Sewn, then taped on the inside and outside of the seam for a very strong chemical and stress resistant seam.

Exclusive DuPont technologies



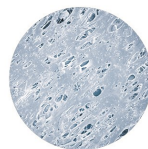
Tychem®

Chemical barrier fabrics specifically engineered for protection over a range of hazards.



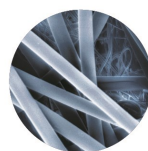
Tyvek®

Tyvek® is high-density polyethylene fibers entangled into a protective material—with no fillers or thin films to wear away. Made only by DuPont, it offers superior protection and durability.



Microporous films (MPF)

Bi-laminate with a thin microporous film layer on a spunbonded polypropylene nonwoven, these fabrics offer limited durability—barrier protection is lost when the film layer is abraded.



Spunbond-meltblown-spunbond (SMS)

SMS fabrics rely on the meltblown polypropylene layer in the middle of the open tri-laminate polypropylene structure to act as the main filter for particles.

Spunbond polypropylene (SBPP)

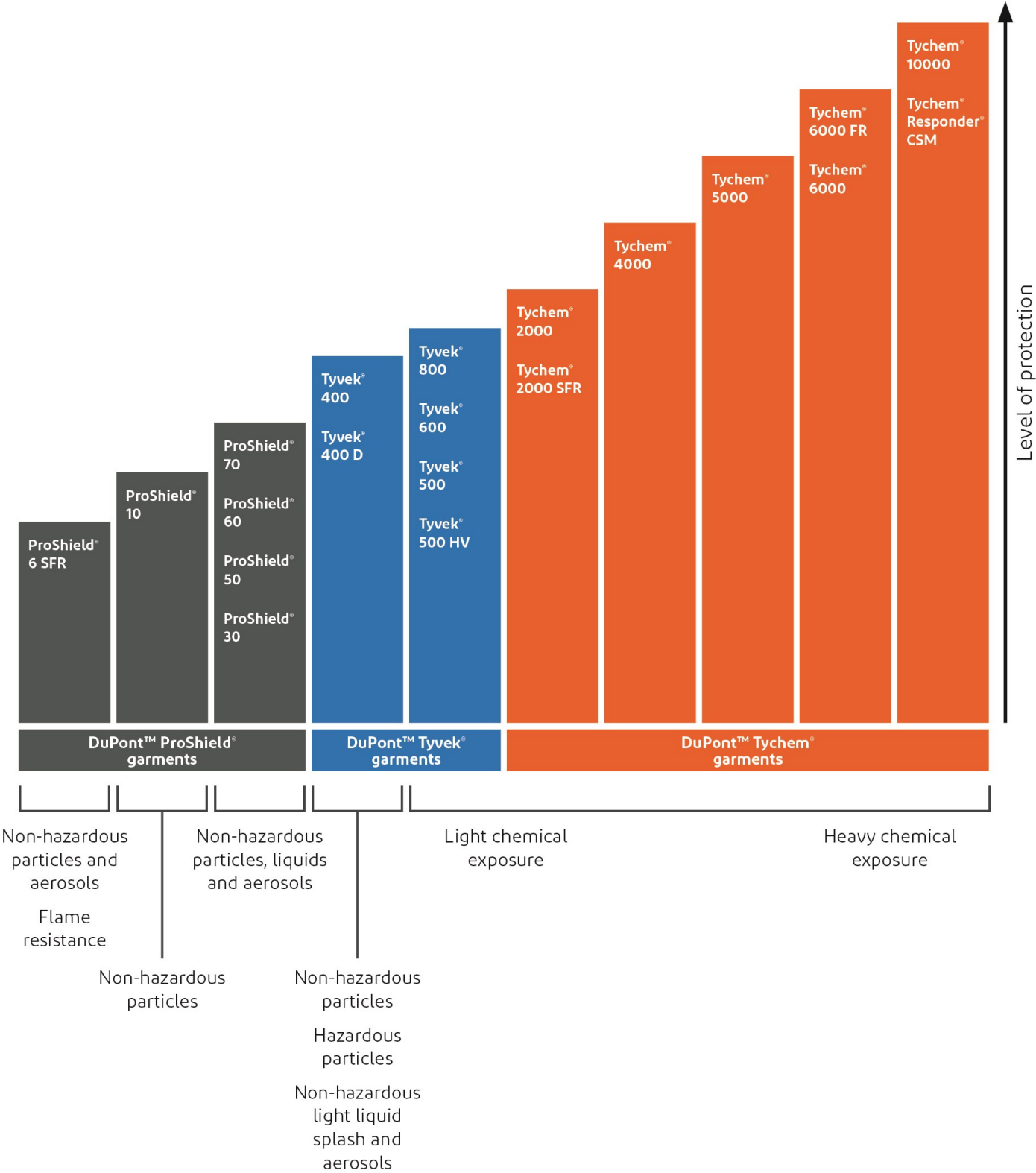
With their highly open structure, SBPP fabrics offer negligible barrier protection.

Increased fabric performance



*Serged and/or bound seams are degraded by some hazardous liquid chemicals, such as strong acids, and should not be worn when these chemicals are present.

DuPont™ Product Information



DuPont™ Product Information

DuPont™ Tyvek® and DuPont™ ProShield® products

Typical general industrial hazards/description/examples

	Non-hazardous								Hazardous														
Garment	Particles		Aerosol	Light liquid splash*					Particles												Aerosol	Bio-hazards**	Flame resistance***
	General dirt & grime	Animal waste	Sanding & grinding waste	Spray paint	Oil & grease	Lubri-cants	Fertilizer	Sewage	Fertilizer	Pesti-cides	Asbestos	Lead	Chromium	Beryllium	Mold	Fiber-glass	Carbon	Radio-active particles	Isocyanate containing				
Tyvek® 400	✓	✓	✓	✓	✓	✓	✓	✓	✓	✓	✓	✓	✓	✓	✓	✓	✓	✓	✓	●			
Tyvek® 500	✓	✓	✓	✓	✓	✓	✓	✓	✓	✓	✓	✓	✓	✓	✓	✓	✓	✓	✓	✓			
Tyvek® 500 HV	✓	✓	✓	✓	✓	✓	✓	✓	✓	✓	✓	✓	✓	✓	✓	✓	✓	✓	✓	✓			
Tyvek® 600	✓	✓	✓	✓	✓	✓	✓	✓	✓	✓	✓	✓	✓	✓	✓	✓	✓	✓	✓	✓			
Tyvek® 800	✓	✓	✓	✓	✓	✓	✓	✓	✓	✓	✓	✓	✓	✓	✓	✓	✓	✓	✓	✓			
ProShield® 70	✓	✓	✓	✓	✓	✓	✓	✓	✓	✓	✓	✓	✓	✓	✓	✓	✓	✓		✓			
ProShield® 60	●	●	●	✓	✓	✓	✓	✓	●	●	●	●	●	●	●	●	●	●	✓	●			
ProShield® 50	●	●	●	✓	✓	✓	✓	✓	●	●	●	●	●	●	●	●	●	●					
ProShield® 30	✓	✓	✓	✓	✓	✓	✓	✓	✓	✓	✓	✓	✓	✓	✓	✓	✓	✓					
ProShield® 10	●	●	●	●	●	●	●	●															
ProShield® 6 SFR	●	●	●	●	●	●															✓		

✓ Generally preferred ● Acceptable for use

*Liquid barrier performance varies based on the amount of liquid that may get on the garment, the length of time the liquid is on the garment, applied pressure and certain physical properties of the liquid. Tyvek® and ProShield® garments are not appropriate if during use they are getting wet (liquid is dripping or running, or it is wet to the touch) or if spotting is observed on skin or garments worn under the protective garment. Serged and bound seams are degraded by some hazardous liquid chemicals, such as strong acids, and should not be worn when these chemicals are present. Tyvek® 600 and Tyvek® 500 garments use a special type of Tyvek® fabric, which has different physical properties and improved chemical resistance properties when compared to fabric used in standard Tyvek® garments. Additionally, the seams used in standard Tyvek® garments are different than the seams for Tyvek® 600 and Tyvek® 500 garments. Tyvek® 600 garments offer seams that are sewn and then taped, and Tyvek® 500 garments offer external serged seams, where the seam thread is visible on the outside of the garment. Tyvek® 500 and Tyvek® 600 offer improved liquid barrier, but may not be appropriate if spotting is observed on the skin or garments worn under the protective garment. In applications where a higher liquid barrier is needed, consider DuPont™ Tychem® 2000 and Tychem® 4000 garments with taped seams.

**Biohazards have a variety of classification methods. These products (garments or fabrics) have been tested to the following standards, including but not limited to AATCC 127 (Tyvek® 400), EN 14126 (Tyvek® 500 HV, Tyvek® 500, Tyvek® 600, Tyvek® 800), ASTM F1670 (ProShield® 60, ProShield® 70) and ASTM F1671 (ProShield® 70). Visit our website for specific testing data.

***ProShield® 6 SFR and Tychem® 2000 SFR coveralls provide only secondary flame-resistant protection. They must always be worn over an appropriate primary flame-resistant garment and primary flame-resistant hood/balaclava in an environment that needs flame protection, along with other personal protective equipment that protects your face, hands and feet.

It is the user's responsibility to determine the nature and level of hazard and the proper personal protective equipment needed. The information set forth herein reflects laboratory performance of fabrics, not complete garments, under controlled conditions. It is intended for information use by persons having technical skill for evaluation under

their specific end-use conditions, at their own discretion and risk. Anyone intending to use this information should first verify that the garment selected is suitable for the intended use. In many cases, seams and closures have shorter breakthrough times and higher penetration rates than the fabric. Please contact DuPont for specific data. If the garment becomes torn, abraded or punctured, end user should discontinue use of garment to avoid potential exposure.

Latex statement: As of January 1, 2006, DuPont production specifications exclude use of components containing natural rubber latex in the manufacture of DuPont™ Tyvek® IsoClean® and DuPont™ ProClean® garments.

Tyvek® 500, Tyvek® 600 and Tyvek® 800 contain natural rubber latex which may cause allergic reactions in some sensitized individuals. Anyone who begins to exhibit an allergic response during the use of DuPont products should immediately cease using these products and should also be reported to DuPont at 1-800-441-3637 (outside the U.S. 1-302-774-1139) so that an investigation can be initiated.

After June 2023, Tyvek® 500, Tyvek® 600 and Tyvek® 800 are manufactured under specifications that exclude components containing natural rubber latex.

Garments should have slip-resistant or anti-slip materials on the outer surface of boots, shoe covers or other garment surfaces in conditions where slipping could occur. Some Tychem® garments have attached socks made of the garment material. These attached socks must be worn inside protective outer footwear and are not suitable as outer footwear. These attached socks do not have adequate durability or slip resistance to be worn as the outer foot covering.

Tyvek® coveralls and ProShield® 60 coveralls can be considered for use with the appropriate respirators and other suitable PPE to minimize contact with isocyanate paint aerosols. Tyvek® garments are not appropriate if they are getting wet (paint is dripping or running, or wet to the touch) or if spotting is observed on skin or garments worn under the coveralls. Tychem® aprons and smocks are available for situations where prolonged liquid exposure may be limited to the front of the torso and/or arms of the wearer. These aprons and smocks can be worn with Tyvek® to provide localized protection while limiting the level of thermal discomfort.

DuPont™ Product Information

Base catalog number

The first six characters provide the basic representation of the product.

Additional product detail

The remaining characters provide additional product detail and complete the full part number.

TY 120 S WH LG 0025 00

Fabric

The first two characters are the fabric description.

Abbreviations

DuPont™ Tychem®

TK 10000
RC Responder® CSM
TP 6000 FR
TF 6000
C3 5000
SL 4000
QC 2000
QS 2000 SFR
99 Accessories

DuPont™ Tyvek®

TJ 800
TY 600
TY 500
TY 500 HV
TY 400
TD 400 D
FC 400 FC

DuPont™ ProShield®

P3 70
NG 60
NB 50
PE 30
PB 10
TM 6 SFR

Style

DuPont offers a wide array of garment styles—from hoods, aprons and coveralls to fully encapsulated suits.

Each garment style has a unique three-digit code.

Seam construction

Abbreviations

S Serged or sewn
B Bound
T Taped or double taped
 See page 7 for details.

Color

Several DuPont fabrics are available in color options.

Abbreviations

BU Blue
GR Green
GY Gray
HV High-visibility orange
LY Lime yellow
OR Orange
TN Tan
WH White
YL Yellow

Size

Many DuPont garments are available in a range of sizes; refer to catalog descriptions for details.

Abbreviations*

XS Extra small
SM Small
MD Medium
LG Large
XL Extra large
2X 2 Extra large
3X 3 Extra large
4X 4 Extra large
5X 5 Extra large
6X 6 Extra large
7X 7 Extra large
8X 8 Extra large
00 Universal

Case count

The number of garments per case.

Options

Abbreviations such as

TV Trade Agreement Act compliant

VP Vend packed

Not all option codes are available for all products; refer to catalog descriptions for details.

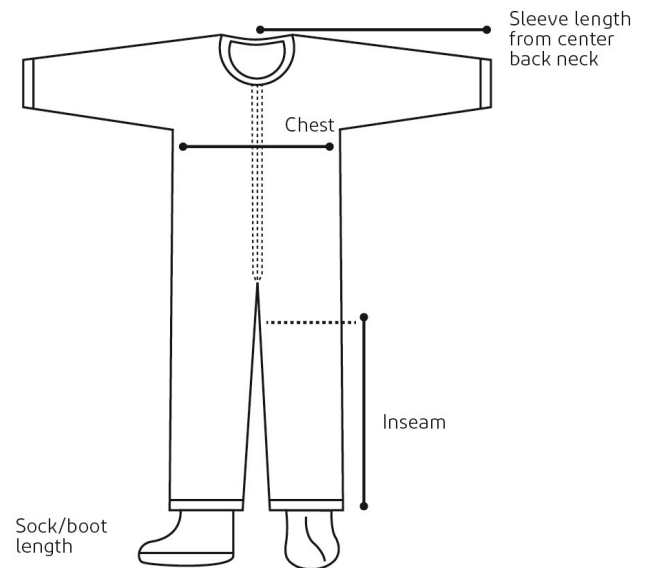
See next page for abbreviations.

*Please refer to DuPont™ SafeSPEC™ for sizing information and garment dimensions. Additional sizing charts available on pages 44 and 45.

Sizing charts

Garment sizing notes:

- Please check chest measurements for most accurate fit
- Garments are meant to be worn over clothing, so measurements may vary slightly from your standard clothing size
- We suggest you try multiple sizes to find the best fit
- For Level A suit sizing, please refer to the product Technical Data Sheet, found on the individual product page at safespec.dupont.com



Size table for DuPont™ Tychem® garments (not including Level A suits)

Size	Fits chest	Fits height
MD	29 3/4 - 38 3/4	5'0" - 5'7"
LG	38 1/4 - 41 3/4	5'5" - 5'9"
XL	41 1/4 - 44 3/4	5'8" - 6'2"
2X	44 1/4 - 47 3/4	6'0" - 6'4"
3X	47 1/4 - 50 3/4	6'2" - 6'5"
4X	50 1/4 - 54 1/4	6'3" - 6'7"
5X	53 3/4 - 57 1/4	6'4" - 6'10"

DuPont™ Product Information

Size table for DuPont™ ProShield® garments

Size	Fits chest	Fits height
SM	28 3/4 - 33 1/4	5'0" - 5'7"
MD	32 3/4 - 37 1/4	5'3" - 5'7"
LG	36 1/4 - 40 3/4	5'5" - 5'9"
XL	39 3/4 - 44 1/4	5'8" - 6'1"
2X	43 1/4 - 47 3/4	5'10" - 6'3"
3X	46 3/4 - 51 1/4	6'0" - 6'4"
4X	50 1/4 - 54 3/4	6'3" - 6'7"
5X	53 3/4 - 58 1/4	6'6" - 6'10"
6X	56 1/4 - 60 1/4	6'9" - 7'1"
7X	58 3/4 - 63 1/4	7'0" - 7'4"

Size table for DuPont™ Tyvek® garments

Size	Fits chest	Fits height
MD	30 - 40 1/4	5'0" - 5'7"
LG	38 1/4 - 43 1/4	5'5" - 5'9"
XL	41 1/4 - 46 1/4	5'8" - 6'2"
2X	43 3/4 - 48 3/4	6'0" - 6'4"
3X	47 3/4 - 52 3/4	6'2" - 6'5"
4X	51 1/4 - 56 1/4	6'4" - 6'7"
5X	54 1/4 - 59 1/4	6'6" - 6'10"
6X	57 3/4 - 62 3/4	6'8" - 7'1"
7X	60 1/4 - 65 1/4	6'10" - 7'4"



SG1140



SG601



SG301



SG713C



TY450S

SG850-18

DuPont Part Number: TY500SWH

Tyvek® Sleeve, 18", Elastic Wrists.

SG713C

DuPont Part Number: TY657SWH

Tyvek® Hood, Elastic Face, Covers Shoulders.

TY450S

DuPont Part Number: TY450SWH

Tyvek® Shoe Cover, Elastic Ankles.

SG601

DuPont Part Number: TY 273BWH

Tyvek® Apron, 28" x 36", Sewn Ties.

SG1140

DuPont Part Number: TY210SWH

Tyvek® Lab Coat.

Sizes: S-5XL

SG1101

DuPont Part Number: TY212SWH

Tyvek® Lab Coat, Snap Front, 2 pockets.

Sizes: M-5XL

SG301

DuPont Part Number: TY350SWH

Tyvek® Pants, Elastic Waist.

Sizes: M-3XL



SG1412



SG1417



SG1428



SG1414

TYVEK®

SG1412

DuPont Part Number: TY120SWH

Tyvek® Coverall, Collar, Zipper.

Sizes: M-6XL

SG1414

DuPont Part Number: TY122SWH

Tyvek® Coverall, Zipper, Attached Hood and Boots, Elastic Wrists and Ankles.

Sizes: M-7XL

SG1417

DuPont Part Number: TY125SWH

Tyvek® Coverall, Collar, Zipper, Elastic Wrists and Ankles.

Sizes: M-5XL

SG1428

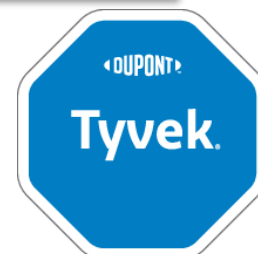
DuPont Part Number: TY127SWH

Tyvek® Coverall, Attached Hood, Elastic Wrists.

Sizes: M-5XL



TY122S





TM120SBU



TM127SBU



TM122SBU



NG127SWH

TM120SBU

ProShield® 6 SFR, Coveralls, Zipper Front.

Sizes: M-6XL

TM122SBU

ProShield® 6 SFR, Coveralls, Hood, Booted, Zipper Front.

Sizes: M-6XL

TM127SBU

ProShield® 6 SFR, Coveralls, Hood, Elastic Wrists and Ankles.

Sizes: M-7XL

NG127SWH

ProShield® 60, Coverall, Hood, Elastic Wrists and Ankles, 25/Case.

Sizes: M-3XL





QC120SYL



QC127SYL



QC500BYL

TYCHEM® 2000

QC120SYL

Tychem® 2000, Coverall, Zipper Front, Storm Flap.

Sizes: M-5XL

QC127SYL

Tychem® 2000, Coverall, Attached Hood, Elastic Wrists and Ankles.

Sizes: L-6XL

QC500BYL

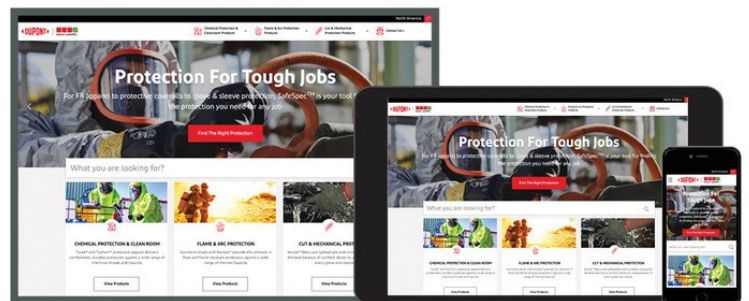
Tychem® 2000, 18" Sleeve, 200/Case. One size fits most.



DUPONT™

Tyvek®

Different jobs require various levels of protective clothing and DuPont offers a wide variety of items to address those needs. We are one of a select few wholesalers for DuPont, which allows us to provide our customers access to their full catalog of products.



DuPont™ SafeSPEC™ is a powerful web-based tool designed to assist you with finding the appropriate DuPont garments for chemical, controlled environment, thermal, electric arc and mechanical hazards. SafeSPEC™ has a full permeation test results database for DuPont™ Tychem® fabrics and allows you to search by either hazard or industry to help you find the right protection for the job at hand.

DUPONT™

DuPont™ SafeSPEC™



CE CERTIFICATION

European Directives 89/686/EEC Conception of Personal Protective Equipment (PPE)

PPE are classified in three categories related to the degree of risk they are designed to protect against. The procedure to prove compliance with the requirements of the Directive is specific for each category and is proportional with the risk.

CATEGORY I

Minor Risks



PPE of simple design, where the designer assumes the user can himself assess the level of protection provided against minimal risks, the effects of which are gradual and can be safely and timely identified by the users.

CATEGORY II

Intermediate Risks



Especially injury. The glove must comply with the one or more standards and is certified by a notified body as being compliant.

CATEGORY III

Irreversible Risks



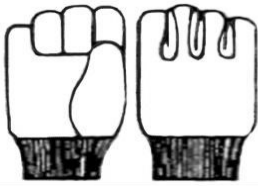
PPE of complex design intended to protect against mortal danger or against serious and irreversible health risks, which cannot be identified in sufficient time.

EN388

Mechanical risks-this standard applies to gloves that protect against physical and mechanical hazards; it specifies requirements for abrasion resistance, perforation resistance, tear resistance and cutting resistance.

GLOVE PATTERNS

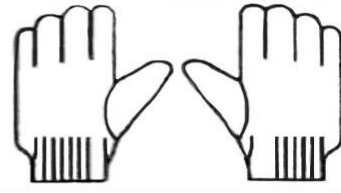
GUNN



CLUTE



REVERSIBLE



GUNN- Extends glove life keeping seams out of work area; available in continuous and wing thumb; made in leather palm and all leather.

CLUTE- Seams on back of glove reduce splitting; holds work area more tightly to palm; one piece palm; made in cotton and leather palm styles.

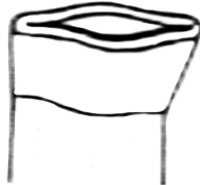
REVERSIBLE- Gunn pattern with thumb out of side; glove can be worn on either hand.

CUFF STYLES

KNIT WRIST



BAND TOP



SAFETY CUFF



GAUNTLET



SLIP ON



KNIT WRIST- Provides comfort and a snug fit.

BAND TOP- For easy removal and good circulation.

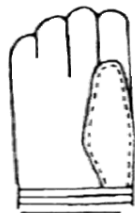
SAFETY CUFF- Side slit enables wearer to throw off the glove quickly.

GAUNTLET- Easy removal and hold tucked sleeve in glove.

SLIP ON- Easy removal.

LEATHER PALM GLOVE FEATURES

STRAIGHT THUMB



WING THUMB



KEYSTONE



STRAIGHT THUMB- Continuous full leather thumb; seam around the thumb.

WING THUMB- Thumb out to side; welts added to the seams for strength.

KEYSTONE- Thumb set-in as a separated piece, positioned naturally for maximum comfort; thumb seam is reinforced with extra stitching.

CHEMICAL RESISTANCE GUIDE

	Nitrile (11 Mil)			Neoprene (22 Mil)			PVC (20 MIL)		
CHEMICAL	<u>D</u>	<u>BT</u>	<u>PR</u>	<u>D</u>	<u>BT</u>	<u>PR</u>	<u>D</u>	<u>BT</u>	<u>PR</u>
Acetaldehyde	F	4m	161	E	21m	18	ID	ID	ID
Acetone	P	ID	ID	E	12m	35	P	>1m	>>
Acetonitrile	ID	ID	ID	E	40m	7	ID	ID	ID
Acrylic Acid	F	ID	ID	ID	ID	ID	ID	ID	ID
Acrylonitrile	P	3m	176	ID	ID	ID	ID	ID	ID
Aldehyde	P	4	161	ID	ID	ID	ID	ID	ID
Aniline	P	1.1h	45	E	>8h	ND	G	>8h	ND
Benzaldehyde	P	ID	ID	ID	ID	ID	ID	ID	ID
Benzene	P	ID	ID	ID	16m	133	ID	2m	250
Benzoyl Chloride	P	ID	ID	ID	ID	ID	ID	ID	ID
Bromobenzene	P	13m	9.1	ID	ID	ID	ID	ID	ID
Butyl Acetate	P	29m	54.4	ID	52m	53	ID	ID	ID
p-t Butyltoluene	P	ID	ID	ID	ID	ID	ID	ID	ID
Butyraldehyde	P	ID	ID	ID	ID	ID	ID	ID	ID
Carbon Disulfide	P	1m	51	ID	ID	ID	ID	ID	ID
Carbon Tetrachloride	G	3.4h	5	F	31m	252	ID	ID	ID
Cellosolve	P	ID	ID	E	5.9h	3	ID	ID	ID
Chlorobenzene	P	ID	ID	ID	ID	ID	ID	ID	ID
Chloroform	P	4m	352	P	12m	220	ID	ID	ID
Chloronaphthalene	P	2.9h	>1.3	ID	ID	ID	ID	ID	ID
Chloroprene	ID	ID	ID	ID	ID	ID	ID	ID	ID
Cyclohexane	P	ID	ID	E	2.7h	7	ID	16m	17
Cyclohexanol	E	>16h	ND	ID	ID	ID	ID	ID	ID
Cyclohexanone	P	ID	ID	ID	ID	ID	ID	ID	ID
Dibutylphthalate	E	>16h	ND	ID	ID	ID	ID	ID	ID
1,1,Dichloroethane	P	ID	ID	ID	ID	ID	ID	ID	ID
1,2,Dichloroethane	P	8m	311	P	33m	247	ID	ID	ID

CHEMICAL RESISTANCE GUIDE

	Nitrile (11 Mil)			Neoprene (22 Mil)			PVC (20 MIL)		
CHEMICAL	<u>D</u>	<u>BT</u>	<u>PR</u>	<u>D</u>	<u>BT</u>	<u>PR</u>	<u>D</u>	<u>BT</u>	<u>PR</u>
Diethylaminoethanol	E	>8h	ND	ID	ID	ID	ID	ID	ID
1,4-Diethylene Dioxide	P	28m	77.1	ID	28m	62	ID	8m	250
Diethylenetriamine	P	ID	ID	ID	ID	ID	ID	ID	ID
Diisobutyl Ketone 80%	F	3h	48.9	ID	ID	ID	ID	ID	ID
Dimethyl Acetamide	ID	ID	ID	ID	ID	ID	ID	ID	ID
Dimethyl Formamide	F	1m	>15	ID	ID	ID	ID	ID	ID
Dimethylsulfoxide	F	ID	ID	ID	ID	ID	ID	ID	ID
Dioxane	P	28m	77.1	ID	28m	62	ID	8m	250
Divinyl Benzene	P	ID	ID	ID	ID	ID	ID	ID	ID
Epichlorohydrin	P	ID	ID	ID	ID	ID	ID	ID	ID
Ether	P	14m	21.8	ID	ID	ID	ID	ID	ID
Ethyl Acetate	P	8m	145	G	34m	178	ID	ID	ID
Ethyl Ether	P	14m	21.8	E	18m	51	ID	ID	ID
Ethylamine 70%	F	1.1h	30.1	ID	ID	ID	ID	ID	ID
Ethylene dibromide	P	ID	ID	ID	ID	ID	ID	ID	ID
Formaldehyde 37%	E	>21h	ND	E	>8h	ND	G	8h	ND
Furan	P	ID	ID	ID	ID	ID	ID	ID	ID
Furfural	P	28m	265	ID	ID	ID	ID	ID	ID
Glutaraldehyde	P	ID	ID	ID	ID	ID	ID	ID	ID
n-Hexane	E	ID	ID	E	39m	5	ID	ID	ID
Hydrazine 70%	G	>8h	ND	E	>8h	ND	E	8h	ND
Hydrochloric Acid 37%	P	ID	ID	E	>8h	ND	E	>8h	ND
Hydrofluoric Acid 50%	P	ID	ID	E	>8h	ND	E	1.8h	0
Isobutyl Alcohol	G	>8h	ND	ID	ID	ID	ID	ID	ID

CHEMICAL RESISTANCE GUIDE

	Nitrile (11 Mil)			Neoprene (22 Mil)			PVC (20 MIL)		
Chemical (cont.)	<u>D</u>	<u>BT</u>	<u>PR</u>	<u>D</u>	<u>BT</u>	<u>PR</u>	<u>D</u>	<u>BT</u>	<u>PR</u>
Isobutyraldehyde	P	ID	ID	ID	ID	ID	ID	ID	ID
Methacrylic Acid	P	1.7h	23	ID	ID	ID	ID	ID	ID
Methacrylonitrile	P	7m	560	ID	ID	ID	ID	ID	ID
Methyl Chloroform	P	41m	76.4	P	27m	197	ID	ID	ID
Methyl Cyanide	ID	ID	ID	E	40m	7	ID	ID	ID
Methyl Ethyl Ketone	P	ID	ID	G	22m	155	ID	1m	>>
Methyl Isocyanate	P	ID	ID	ID	ID	ID	ID	ID	ID
Methylamine 40%	G	>8h	ND	ID	ID	ID	ID	ID	ID
Methylene Chloride	P	4m	766	F	6m	239	ID	ID	ID
Methylene Dianiline	F	ID	ID	ID	ID	ID	ID	ID	ID
Methylene Dichloride	P	4m	766	ID	ID	ID	ID	ID	ID
Morpholine	P	48m	206	ID	ID	ID	ID	ID	ID
Nitric Acid, 3 Molar	P	ID	ID	E	>8h	ND	E	1.9h	0
Nitrobenzene	F	33m	1.7	G	1h	20	ID	ID	ID
Nitropropane	P	16m	29.5	ID	ID	ID	ID	ID	ID
Oxalic Acid	G	ID	ID	ID	ID	ID	ID	ID	ID
PCB, Aroclor 1254 50%	F	ID	ID	ID	ID	ID	ID	ID	ID
Pentachlorophenol 1% (2)	E	>13h	ND	ID	8h	ND	ID	ID	ID
n-Pentane	E	ID	ID	ID	38m	3	ID	9m	17
Perchlorethylene	F	>1.3h	5.5	ID	28m	75.5	ID	ID	ID
Phenol 85%, water sat	P	39m	>1500	E	>8h	ND	ID	32m	13
Propyl Acetate	P	17m	72.5	ID	ID	ID	ID	ID	ID
Propylenediamine	F	ID	ID	ID	ID	ID	ID	ID	ID
Pyridine	P	ID	ID	ID	28m	117	ID	1m	>>
Red Fuming Nitric Acid	P	ID	ID	ID	ID	ID	ID	ID	ID
Sodium Hydroxide 50%	G	ID	ID	E	>6.7h	ND	E	8h	ND

CHEMICAL RESISTANCE GUIDE

	Nitrile (11 Mil)			Neoprene (22 Mil)			PVC (20 MIL)		
Chemical (cont.)	<u>D</u>	<u>BT</u>	<u>PR</u>	<u>D</u>	<u>BT</u>	<u>PR</u>	<u>D</u>	<u>BT</u>	<u>PR</u>
Styrene	P	ID	ID	ID	ID	40	ID	27m	40
Sulfuric Acid, 3 Molar	P	ID	ID	E	>6.7h	ND	E	>8h	ND
Tetrachloroethylene	F	1.3h	5.5	ID	28m	75.5	ID	ID	ID
Tetraethylene-pentamine	F	ID	ID	ID	ID	ID	ID	ID	ID
Tetrafluoroethylene	ID	ID	ID	ID	ID	ID	ID	ID	ID
Tetrahydrofuran	P	4m	167	P	11m	671	ID	1m	>>
Thiophene	P	ID	ID	ID	ID	ID	ID	ID	ID
Toluene	P	11m	68.1	ID	14m	576	ID	3m	350
Toluene Diisocyanate	G	3.7h	1.8	ID	ID	ID	G	>6.7	ND
Trichloroethane	P	8m	283	ID	11m	881	ID	ID	ID
1,1,1 Trichloroethane	F	41m	76.4	P	27m	197	ID	ID	ID
1,1,2 Trichloroethane	P	ID	ID	ID	ID	ID	ID	ID	ID
Triethylamine	E	>8h	ND	ID	ID	ID	ID	ID	ID
Vinyl Chloride	G	5.7h	0.14	ID	ID	ID	ID	ID	ID
Xylene	P	ID	ID	ID	23m	135	ID	4m	383

Glove Chemical Resistance Guide (1)

E=Excellent; **G**=Good; **F**=Fair; **P**=Poor; **ND**=None detected; **ID**=Insufficient Data; **D**=Degradation; **BT**=Breakthrough, amount of elapsed time after initial exposure before the chemical can be analytically detected on the inside surface of the glove; **PR**=Permeation Rate is expressed in mg/m²/sec. PR can be used for estimating glove thickness required; for a given material, thicker is more resistant.



STYLE	DESCRIPTION	FEATURES	APPLICATIONS	CERT
9-BL134	Fully coated blue latex body, sandy microfoam latex palm, insulated liner	13G blue acrylic terrycloth liner, water resistant	Cold storage, energy production, transportation, marine, construction, agriculture, and general assembly	EN338: 3X42D ANSI: A4
9-ORL134	Fully coated orange latex body, sandy microfoam latex palm, insulated liner	13G orange acrylic terrycloth liner, water resistant	Cold storage, energy production, transportation, marine, construction, agriculture, and general assembly	EN338: 3X42D ANSI: A4
9-NE407G	Hi-Vis Green, latex foam palm, acrylic liner, knit wrist	Comfortable 7G Green, black foam latex palm	Emergency response, airport personnel, shipping and receiving, lawn service, and sanitation workers	EN338: 2231B
A6PVCIMP2	100% PVC coated glove over cotton liner, impact back of hand and fingers, 12" Gauntlet cuff	Cut, abrasion, puncture and heat resistant, flexible and high dexterity in low temperatures	Refining, degreasing, plating, petrochemical industries, cleaning and maintenance	ANSI: A6 IMPACT 2
ARC134	Highly engineered yarn liner with flame resistant coating, knit wrist, nitrile palm	Flame, cut, heat and arc flash resistant, anti-static and touch screen design, high dexterity	Electrical equipment operation, welding construction and automotive industries	EN338: 4X43D ANSI: A4
ATV102	Black Anti-vibration glove with latex and rubber palm	10 gauge polyester liner, reinforced thumb crotch, padded palm and fingers for shock absorption	Construction, carpentry, sanding, drilling/mining and demolition	ANSI: A2
BPU4 (Black) WPU4 (White) GPU3 (Grey)	13 Gauge nylon liner with PU coating	Provides superior dexterity and sensitivity, breathable back for comfort	Electronic, computer, automotive and small parts handling	EN338: 4131
C6DD	Grey Polyester cotton shell with black PVC dots on both sides.	13G HPPE liner with a knit wrist to keep debris out, double sided dots for a longer lasting and an ambidextrous fit	General labor, material handling, shipping/receiving and manufacturing	EN338: 4X43E ANSI: A6
CR5	Goatskin Driver with HPPE cut resistant liner and Hi-Vis orange TRP fingers	Reinforced thumb crotch, wing thumb, Hi-Vis Orange and white, color coded hems	Construction, farming, machine operation, utility work, and general applications	EN338: 4523 ANSI: A5
CR73YB	Goatskin Driver with HPPE cut resistant liner and Hi-Vis TRP fingers	Reinforced wing thumb and index finger, Hi-Vis Green TPR, open cuff	Construction and jobs that requires high cut resistance and impact protection	EN338: 4X45F ANSI: A7 IMPACT 3
CR772K	A Grade Goatskin welding glove, Kevlar lining for added cut resistance, cowhide split cuff, wing thumb	Sewn with Kevlar, full Kevlar liner for cut and heat resistance	Construction, iron work, ship building, steel work, welding, torch work and steel mills	ANSI: A6



STYLE	DESCRIPTION	FEATURES	APPLICATIONS	CERT
CR773K-IMP	A Grade Goatskin welding glove, Kevlar lining for added cut resistance, impact fingers and back of hand, cowhide split cuff, wing thumb	Sewn with Kevlar, full Kevlar liner for cut and heat resistance, TPR impact protection	Construction, iron work, ship building, steel work, welding, torch work and steel mills	EN338: 3X32D ANSI: A6
CR8465DP	A/B grade goatskin driver glove, impact fingers and back of hand, keystone thumb	Comfortable goatskin, heat rated level 1, double palm for added protection, reinforced thumb crotch	Construction, farming, machine operation, utility work, and general applications	EN338: 3341F ANSI: A4
CR8465HV	A/B grade goatskin driver glove, Hi-Vis orange finger tips, HPPE liner, 'Watch Your Hands' logo	Reinforced thumb crotch, wing thumb, Hi-Vis Orange and white, color coded hems	Construction, farming, machine operation, utility work, and general applications	ANSI A5
CRBN3	HPPE, cut resistant glove, nitrile foam coating	Resistance to abrasion and cuts, excellent comfort due to the seamless liner, machine washable to 40°C	Automotive, glass handling, recycling, sheet metal work, cutting applications, bottling and canning, delicate and precise operations	EN338: 4543
DB84-12	Blue PVC coated over full cotton lining, sandy finish, cut, abrasion, puncture and heat resistant	Remains flexible with dexterity at low temperatures, 12" Gauntlet cuff, superior grip when wet	Refining, degreasing, plating, petrochemical industries, cleaning and maintenance	EN338: 4121
DLX134	Green latex body, black sandy microfoam latex palm, cut resistant liner, knit wrist	Fully coated latex for water resistance, wing thumb for excellent dexterity, silicone coated knit wrist	Transportation, warehousing, energy production, construction, agriculture, general assembly and marina work	EN338: 3X42D ANSI: A4
DYPU5	Heavy weight knitted from 100% ultra high density polyethylene fiber on the palm	Resistance to abrasion and cuts, excellent comfort due to the seamless liner, outstanding flexibility and dexterity due to the thin coating, machine washable to 40°C	Automotive, glass handling, recycling, sheet metal work, cutting applications, bottling and canning, delicate and precise operations	EN338: 4444
GBN5	Grey HPPE/Nylon/Glass Fiber/Spandex liner, black foam padded nitrile palm, TPR impact fingers and back of hand	A multi-tasking cut resistant glove with TPR fingers and back of hand, foam padded sandy nitrile palm	Construction, carpentry, material handling, hand/power tool use, light demolition, and assembly	EN338: 4X43 ANSI:A5
GDYP4(Grey) WDP3(White)	Knitted from 100% ultra high-density polyethylene fiber and coated with polyurethane on the palm	Resistance to abrasion and cuts, excellent comfort due to the seamless liner, outstanding flexibility and dexterity due to the thin coating, machine washable to 40°C	Automotive, glass handling, recycling, sheet metal work, cutting applications, bottling and canning, delicate and precise operations	EN338: 4344
GMB-T15454	Ultra thin and high dexterity, with black PU coating, knit wrist	Touch Screen compatible, Filament Fiber knitted liner, free from fiberglass and steel fiber	Packaging, printing, agriculture, transportation and warehouse, construction and general assembly	EN338: 4X42E ANSI: A5
GNF812	Green nitrile glove with interlock lining, sandy finish, 12" gauntlet cuff	Sandy finish provides wet grip resistance, designed to prevent oil penetration, odor suppression minimizes generation of odor	Refining, degreasing, plating, petrochemical industries, cleaning, maintenance, automobile assembly, electro-plating and waste disposal	EN338: 4131
GR13GC5	HPPE ,Hi-Vis green ,TPR with sandy nitrile palm	Synthetic leather palm, injection molded with Thermo Plastic Rubber (TPR), Ethylene Vinyl Acetate (EVA) padding in palm and back for impact resistance	Construction, auto repair, demolition, manufacturing, mining fabrication. landscaping, heavy construction and applications requiring protection from impact to the hands	EN338: 4543 ANSI: A8



STYLE	DESCRIPTION	FEATURES	APPLICATIONS	CERT
GR2012	Green hi-vis impact glove, molded TPR fingers, synthetic leather, EVA foam palm, slip on	Synthetic leather palm, injection molded with Thermo Plastic Rubber (TPR), Ethylene Vinyl Acetate (EVA) padding in palm and back for	Construction, auto repair, demolition, manufacturing, mining fabrication. Landscaping, heavy construction and applications requiring	EN388: 3233
HGLP5	Hi-Vis Green, Goatskin driver with TPR fingers and back of hand, Aramid liner, Velcro closure	Reinforced thumb crotch, Hi-Vis green mesh, premium goatskin double leather palm	Construction, farming, machine operation, utility work, and general applications	ANSI: A5 IMPACT 1
HV	HPPE Hi-Vis green foam nitrile glove	Resistance to abrasion and cuts, excellent comfort due to the seamless liner, Hi-Vis for extra visibility, machine washable to 40°C	Automotive, glass handling, recycling, sheet metal work, cutting applications, bottling and canning, delicate and precise operations	EN388: 4544 ANSI: A4
HVNF133	Hi-Vis Green Nylon/spandex, sandy nitrile palm, knit wrist	15G cut resistant liner, touch screen compatible	General assembly of parts, metal handling, machine operation and automotive components	ANSI: A3
HV4IMP	Grey Steel/glass/nylon with Hi-Vis Orange TPR back of hand and finger tip, nitrile palm	Reinforced thumb crotch, low profile TPR for flexibility and dexterity, knit wrist and Velcro closure	Manufacturing, oil & gas, utilities and engineering	EN388: 4X43DP ANSI: A4 IMPACT 1
HVD1844IMP	Cut resistant glove with TPR back, dotted nitrile palm, and knit	18G flexible dotted nitrile palm provides superior grip, reinforced thumb crotch	Handling small oily parts, sanitation, automotive	ANSI: A4 IMPACT 1
HVD1884IMP2	Cut resistant glove with TPR back, dotted nitrile palm, and knit wrist	18G flexible dotted nitrile palm provides superior grip, reinforced thumb crotch	Handling small oily parts, sanitation, automotive	ANSI: A8 IMPACT 2
HVG182IMP	Green corded cotton/poly, TPR impact back of hand and fingers	Nap in corded double palm, wing thumb, knit wrist	Oil and Gas, Mining, Construction, Agriculture, Carpentry, Warehousing, General Purpose	ANSI: A2 IMPACT 1
HVNGOR5	Impact glove, cut resistant, Hi-Vis nitrile palm	Synthetic leather palm, injection molded with Thermo Plastic Rubber (TPR), Ethylene Vinyl Acetate (EVA) padding in palm and back for impact resistance	Construction, auto repair, demolition, manufacturing, mining fabrication. Landscaping, heavy construction and applications requiring protection from impact to the hands	ANSI: A7
LB3	HPPE, Cut resistant glove, latex crinkle coated	Resistance to abrasion and cuts, excellent comfort due to the seamless liner, outstanding flexibility and dexterity due to the thin coating, machine washable to 40°C	Automotive, glass handling, recycling, sheet metal work, cutting applications, bottling and canning, delicate and precise operations	EN388: 4543 ANSI: A3
N3	HPPE, cut resistant glove, Black nitrile coated	Resistance to abrasion and cuts, excellent comfort due to the seamless liner, outstanding flexibility and dexterity due to the thin coating, machine washable to 40°C	Automotive, glass handling, recycling, sheet metal work, cutting applications, bottling and canning, delicate and precise operations	EN388: 4543 ANSI: A3
NF300 (Grey/White), NF500BB (Black/Black)	13 Gauge nylon liner with nitrile palm coating	Provides the highest level of grip and soaks up the oil to ensure the hand won't slip in oily conditions	Automotive, packaging inspection, component assembly and gardening	EN388: 4121



STYLE	DESCRIPTION	FEATURES	APPLICATIONS	CERT
NFG13	Grey polyester and nylon liner, black nitrile microfoam palm, knit wrist	Anti-static/electrostatic compliant for use in ESD protected areas, oil resistant palm	Handling small oily parts, sanitation, automotive components and general assembly	EN338: 4121X
NMF506 (Plain Palm) NMFD608 (Micro-Dots)	15 gauge grey nylon, black nitrile Micro-Foam, palm coated. Available with or without micro-dots on the palm	Micro-Foam nitrile coatings are compatible with light oils and provide good grip and excellent abrasion resistance	Automotive, packaging inspection, component assembly and gardening	EN338: 4131
NMF5075	Black fully coated micro-foam palm with grey cut resistant liner	Fully dipped nitrile, knit wrist, color coded hems	Handling small oily parts, sanitation, automotive components and general assembly	EN338: 4131
NMFD1864	Black fully coated micro-foam palm with grey cut resistant liner, dotted palm	Fully dipped nitrile, knit wrist, color coded hems, reinforced thumb crotch	Handling small oily parts, sanitation, automotive components and general assembly	ANSI: A6
OR200	Orange hi-vis impact glove, molded TPR fingers, synthetic leather, EVA foam palm, Velcro closure	Synthetic leather palm, injection molded with Thermo Plastic Rubber (TPR), Ethylene Vinyl Acetate (EVA) padding in palm and back for impact resistance	Construction, auto repair, demolition, manufacturing, mining fabrication. Landscaping, heavy construction and applications requiring protection from impact to the hands	EN388: 3233
OR500	Orange hi-vis impact glove, molded TPR fingers, synthetic leather, EVA foam palm, slip on style	IsoLiquid® breathable bonded membrane built the first layer of oil-free protection, 100% rubber composition padding provides the 2nd layer of oil permeating protection, TPR patch on fingers for impact protection and pinch injury prevention	Oil/Gas drilling, extraction and refining, fracking, tool pushing, mining, demolition, heavy construction, cargo handling, and iron work	EN388: 3233
PU372	HPPE soft fiber, polyurethane	Resistance to abrasion and cuts, excellent comfort due to the seamless liner, outstanding flexibility and dexterity due to the thin coating, machine washable to 40°C	Automotive, glass handling, recycling, sheet metal work, cutting applications, bottling and canning, delicate and precise operations	EN388: 4342 ANSI:A2
SBN718	Grey cut resistant liner, black sandy foam nitrile coated palm, knit wrist	18G, reinforced thumb crotch, free from steel fiber and fiberglass, touch screen compatible	Glass handling, packaging, printing, agriculture and general assembly	EN338: 4X43F ANSI: A8
SBNCR6	Black HPPE/basalt/steel liner, nitrile foam dip palm, knit wrist	13G cut resistant liner, seamless construction for a comfortable fit	Glass handling, material/sheet assembly, automotive and construction	EN338: 4X42F ANSI: A6
SBNCR913	Blue cut resistant liner, black sandy foam nitrile palm, knit wrist	13G cut resistant liner, seamless construction for a comfortable fit, touch screen compatible	Including glass handling, material/sheet assembly, automotive, construction, machinery & equipment maintenance	EN338: 4X42F ANSI: A9
SCPU5	Heavy weight steel wire with PU palm coating, extended cuff for extra protection	Resistance to abrasion and cuts, excellent comfort due to the seamless liner, outstanding flexibility and dexterity due to the thin coating, machine washable to 40°C	Automotive, glass handling, recycling, sheet metal work, cutting applications, bottling and canning, delicate and precise operations	EN338: 3541
SPARTACUS	HPPE, cut resistant knit glove, coated polyurethane palm	Resistance to abrasion and cuts, excellent comfort due to the seamless liner, outstanding flexibility and dexterity due to the thin coating, machine washable to 40°C	Automotive, glass handling, recycling, sheet metal work, cutting applications, bottling and canning, delicate and precise operations	EN388: 4543 ANSI: A4



STYLE	DESCRIPTION	FEATURES	APPLICATIONS	CERT
SPARTTC	Grey HPPE liner with PU palm, leather reinforced thumb crotch, sewn with Kevlar	Breathable coating for long lasting comfort, excellent dexterity, knit wrist	Glass handling, packaging, printing, agriculture and general assembly	EN388: 4543 ANSI: A4
SPG-T133	Grey HPPE liner with PU palm, leather reinforced thumb crotch, sewn with Kevlar	Touch screen compatible, resistant to abrasions and tears, light weight and stretchable for dexterity and comfort	Glass handling, packaging, printing, agriculture and general assembly	EN388: 4X43C ANSI: A3
TK5LP	TAEKI cut resistant, cut level 5, leather palm	Excellent cut resistance, leather patch for high mechanical & heat protection glove	Used for material handling, glass handling operations, fishing industries, sanitation, general maintenance, woodworking, waste handling and recycling	EN388: 4542
V9870BT (Band Top) V9870KW (Knit Wrist)	Nitrile fully coated, jersey lined, safety cuff and available in a knit wrist	Resistant to cuts, snags, punctures, abrasion, grease and oil	Abrasive materials, automotive assembly, construction, sheet metal industries, rough castings, recycling and utilities	EN388: 4211
V9875BT (Band Top), V9875KW (Knit Wrist)	Nitrile palm coated, jersey lined, safety cuff and available in knit wrist	Resistant to cuts, snags, punctures, abrasion, grease and oil	Abrasive materials, automotive assembly, construction, sheet metal industries, rough castings, recycling and utilities	EN388: 4121
X5	HPPE, cut resistant glove, polyurethane palm	Resistance to abrasion and cuts, excellent comfort due to the seamless liner, touch screen capability, machine washable to 40°C	Automotive, glass handling, recycling, sheet metal work, cutting applications, bottling and canning, delicate and precise operations	EN388: 4543 ANSI: A6

Seattle Glove Inc.

11524 Cyrus Way Mukilteo, WA. 98275

Tel: 425.493.9360 Toll Free: 800.917.2020 Fax: 425.493.8038

www.seattleglove.com

Authorized Distributor

